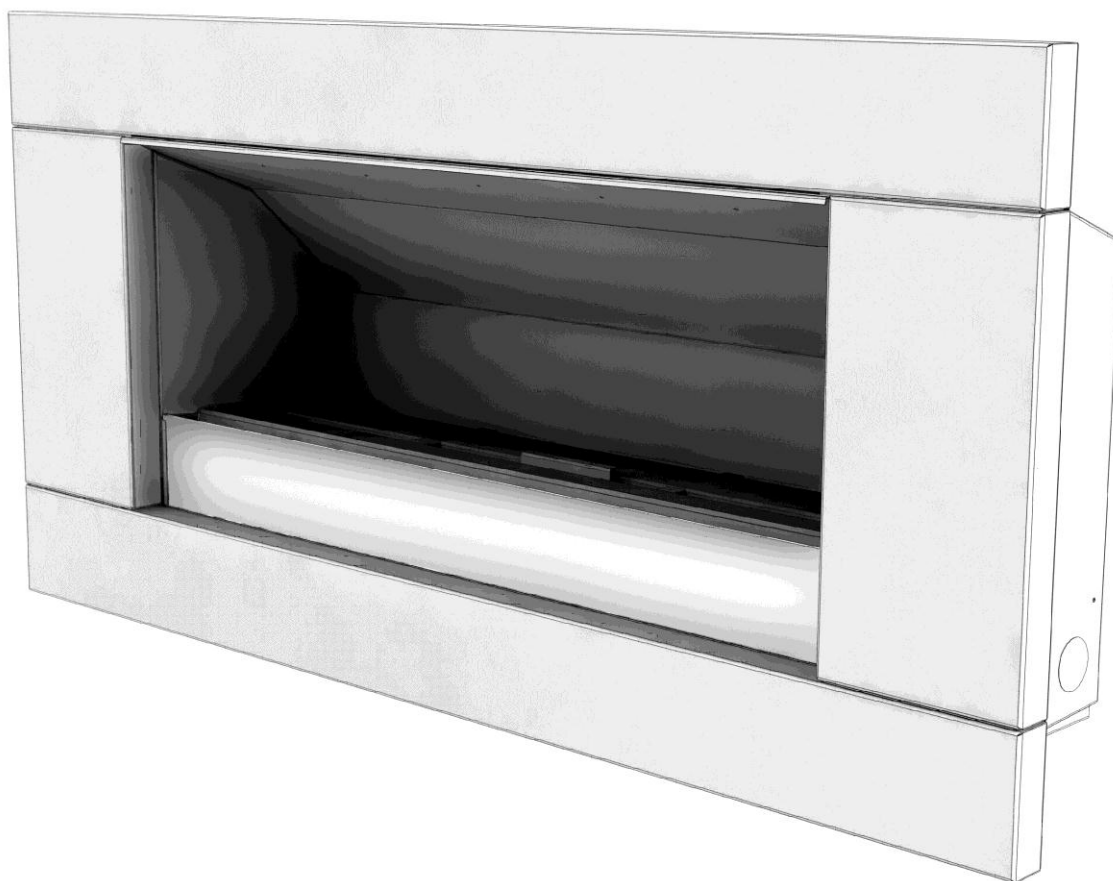


Installation Manual

EF5000 – AUS



Important:

The appliance shall be installed in accordance with;

- Local gas fitting regulations
- Municipal building codes
- AS 5601 / AG 601—2000, *Gas installations*
- Any other relevant statutory regulations.
- TO BE INSTALLED ONLY BY AN AUTHORIZED PERSON
- THIS APPLIANCE MUST NOT BE INSTALLED OR USED INDOORS
- INSTRUCTIONS MUST BE LEFT WITH THE CONSUMER AND THE CONSUMER TO RETEAIN THEM FOR FUTURE REFERENCE.

Manufactured by: Escea Ltd, PO Box 5277 Dunedin NZ, Ph: +64 3 4788220, email: info@escea.net
For contact details of your local Escea distributor or dealer please visit www.escea.net

Warning:

Children and adults should be alerted to the hazards of high surface temperatures, burns and clothing ignition.

Young Children should be carefully supervised when they are in the area of the appliance.

Clothing or other flammable materials should not be hung from the appliance, or placed on or near the appliance.

Any guard or other protective device removed for servicing the appliance must be replaced prior to operating the appliance.

Installation of appliances fitted to fixed gas supply systems and repair of all appliances must be carried out by a qualified service person.

A qualified service person should inspect and service this product at least annually.

Cleaning may be required in order to keep the control compartment, burners, and circulating air passageways clean.

The 240/24volt plug pack MUST be installed inside and out of the weather. It MUST be kept dry and protected from rain and water ingress.

This Gas Fire is for outdoor use only.

Contents:	Page:
Product description _____	1.0
Power supply _____	2.0
Creating the cavity _____	3.0
Wall cladding around the fire _____	4.0
Minimum install height off the ground _____	5.0
Types of installation _____	6.0
Corner Installations _____	7.0
Laying gas pipe _____	8.0
Fixing the fire into the cavity _____	9.0
Connecting gas pipe _____	10.0
Connecting the power supply and touch panel _____	11.0
Testing of touch panel and spark ignition _____	12.0
Checking operating pressure _____	13.0
Assembly of stone cartridge _____	14.0
Fitting the fascia _____	15.0
Placement of ceramic pebbles _____	16.0
Operating Instructions _____	17.0
Maintenance and cleaning _____	18.0
Electrical Schematic _____	19.0
Warranty _____	20.0

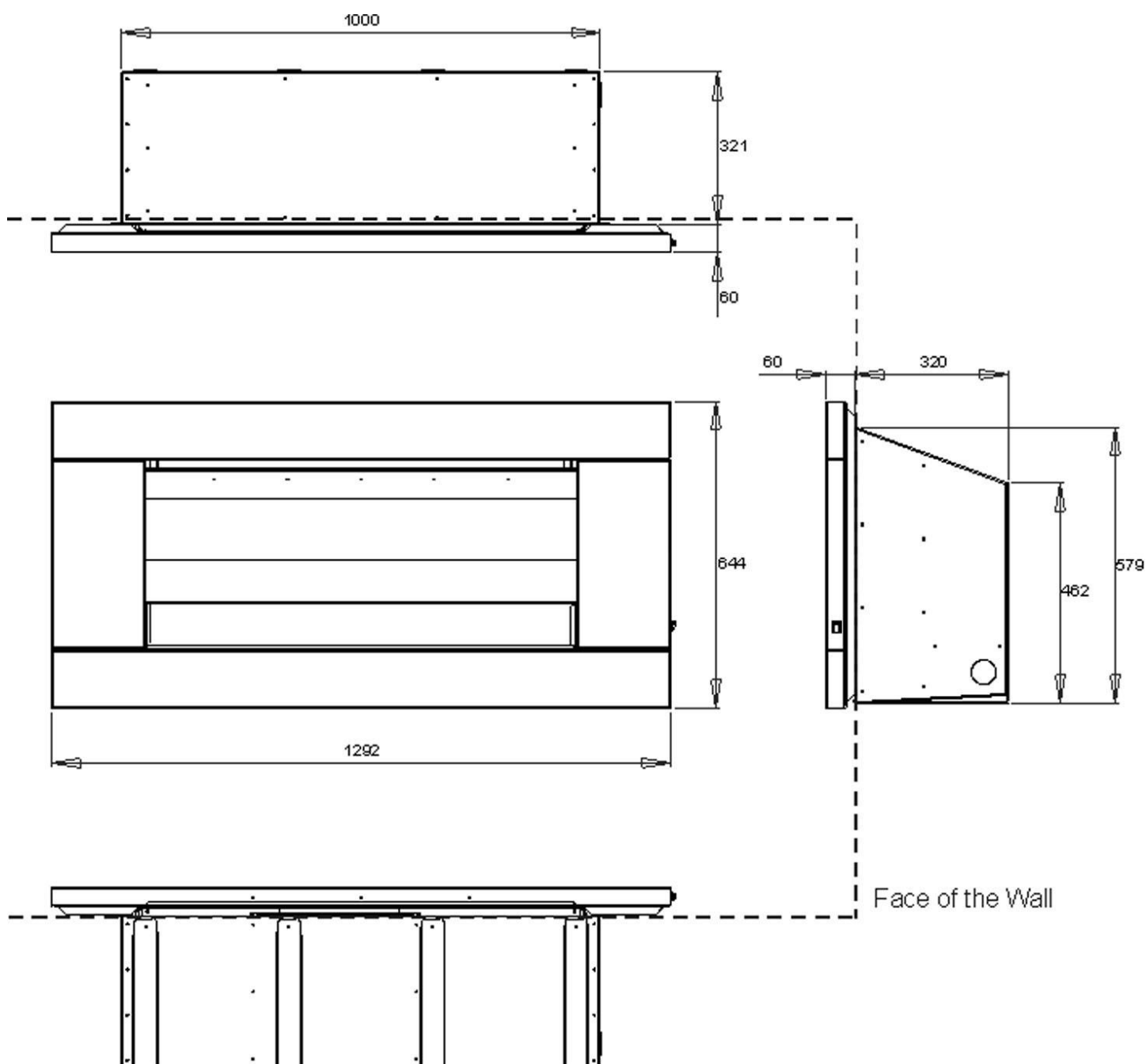
1.0 Product Description:

The escea EF5000 flame effect gas fire is designed for outdoor use only. This appliance requires no flue and must be permanently installed into a cavity. It may be installed into a timber cavity.

The fire is controlled by the user from a switch that is situated on the lower right hand side of the stainless steel fascia.

The Data Label, containing all technical information such as manufacture date, serial number, gas type, jet size, etc, can be found in the lower right hand side of the fire, below the firebox, to access this, the fascia must be removed.

1.1 Product dimensions: (mm)



2.0 Power Supply:

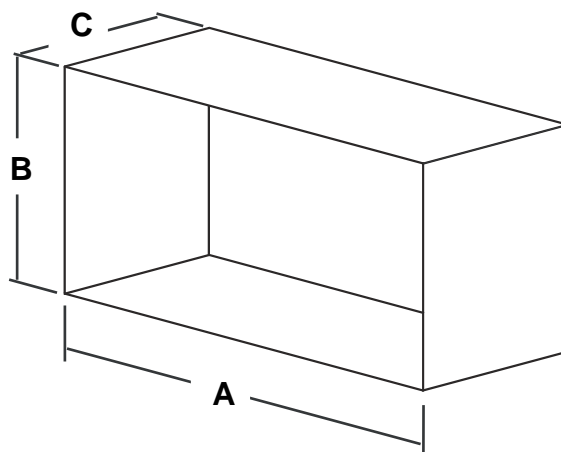
This appliance requires a constant external 24V AC 1A power supply to mains electricity. A transformer is supplied with the fire.

3.0 Creating the Cavity:

The dimensioned drawing below shows the size of opening that must be created to install the unit.

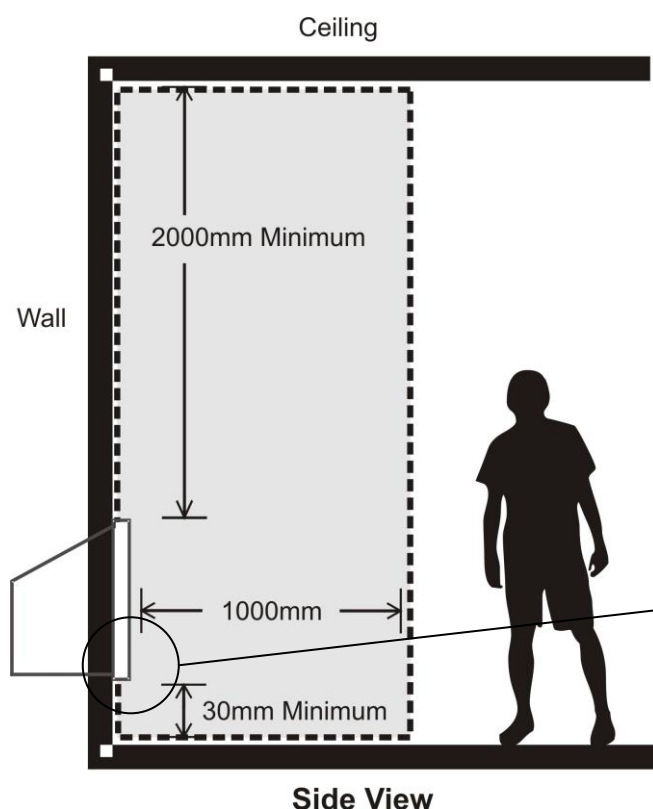
3.1 Cavity Dimensions:

Minimum Cavity Dimensions		
A	B	C
1010 mm	585 mm	330 mm



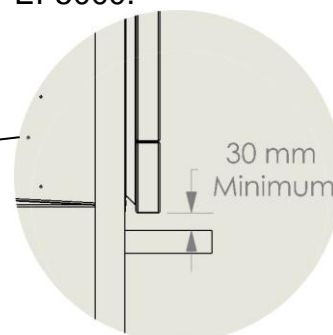
3.2 Where possible, it is recommended that the cavity is made slightly larger than the above dimensions to give the installer the maximum amount of space to work in.

3.3 Clearances to combustibles:



Minimum clearance distance between a combustible ceiling and the fascia must be no less than 2000mm.

Warning: Under no circumstances should any object such as people, pets, furniture, etc. be closer than 1 metre in front of the escea EF5000.



4.0 Wall cladding around fire:

- 4.1 The temperature of the wall directly above the heater does get hot and hence may discolour paint finishes.
- 4.2 Some dark coloured exhaust stains may also become visible directly above the fire due to exhaust. In most cases this can be cleaned off with water and a brush.

5.0 Minimum install height:

The fire has ventilation gaps behind the fascia at the top and bottom. These must not be blocked, so ensure there is a gap of at least 30mm between the bottom of the fascia and anything below.

6.0 Types of Installation:

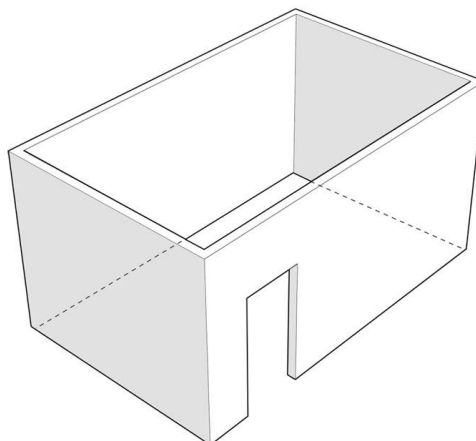
This appliance shall only be used in an above ground open-air situation with natural ventilation, without stagnant areas, where gas leakage and products of combustion are rapidly dispersed by wind and natural convection.

Certain materials or items, when placed under or near the appliance, will be subjected to radiant heat and could become damaged.

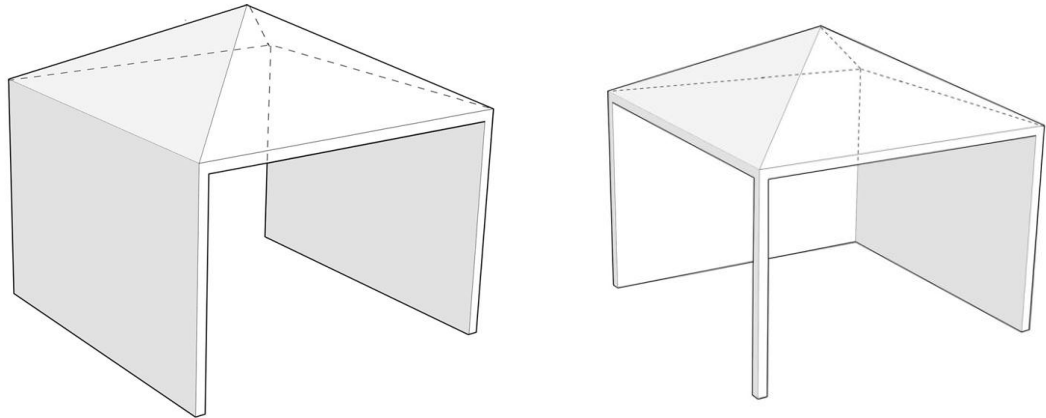
The following installation diagrams are escea recommendations only and may or may not comply with your local council standards. Please check with your local council for actual building standards.

Typically an outdoor space is not enclosed but, any enclosure in which the appliance is used should comply with one of the following:

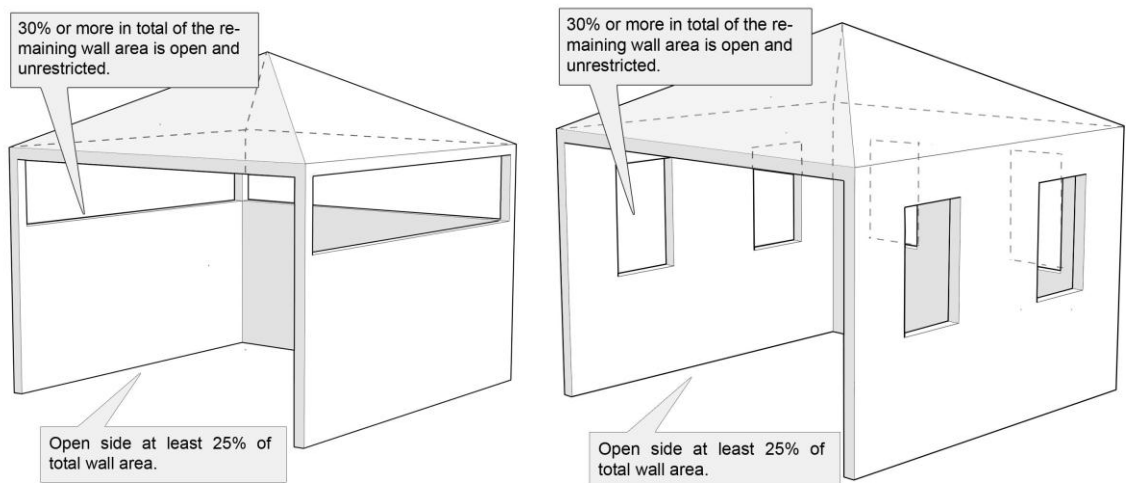
- An enclosure with walls on all sides, but at least one permanent opening at ground level and no overhead cover.



- Within a partial enclosure that includes an overhead cover and no more than two walls.



- Within a partial enclosure that includes an overhead cover and more than two walls, the following should apply:
 - At least 25% of the total wall area is completely open, and
 - At least 30% of the remaining wall area is open and unrestricted

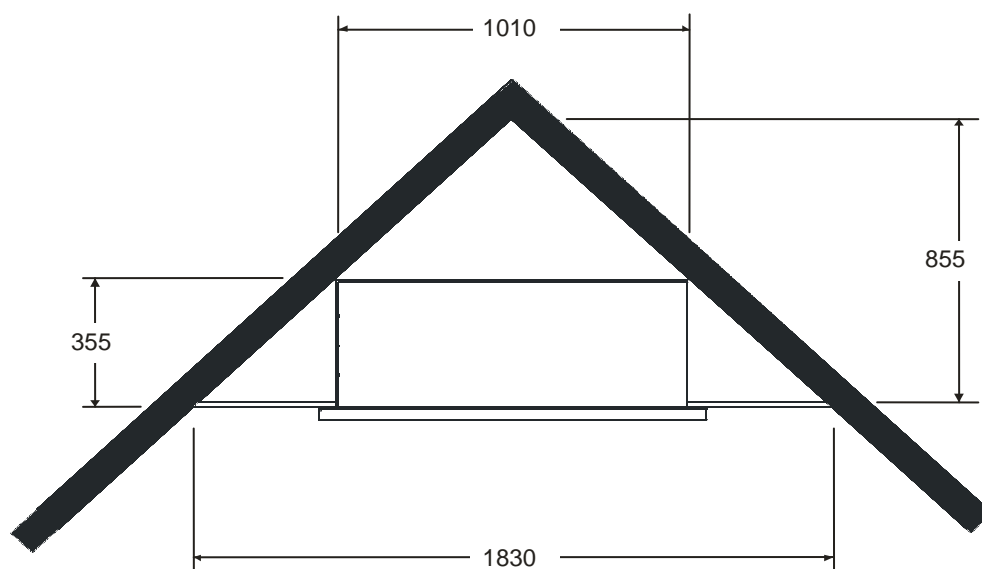


Rectangular areas have been used in the above diagrams; the same principles apply to any other shaped area.

In the case of balconies, at least 20% of the total wall area should be and remain open and unrestricted.

7.0 Corner Installations:

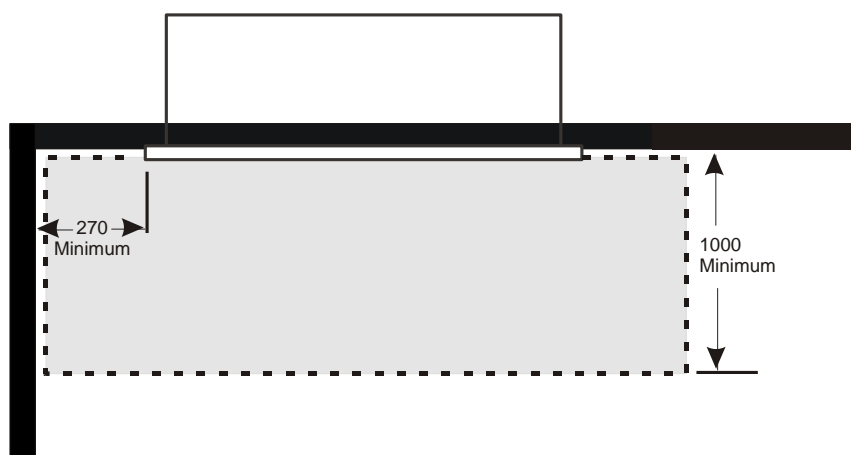
If a cavity is to be created in a corner, the following drawings give the minimum sized interior wall dimensions possible.



Note:

Allowances need to be made for cladding the internal of the cavity.

Dimensions of the cavity in this diagram represent the internal size only.



Minimum clearance distance between adjacent wall and fascia needs to be no less than 270mm.

8.0 Laying Gas Pipe:

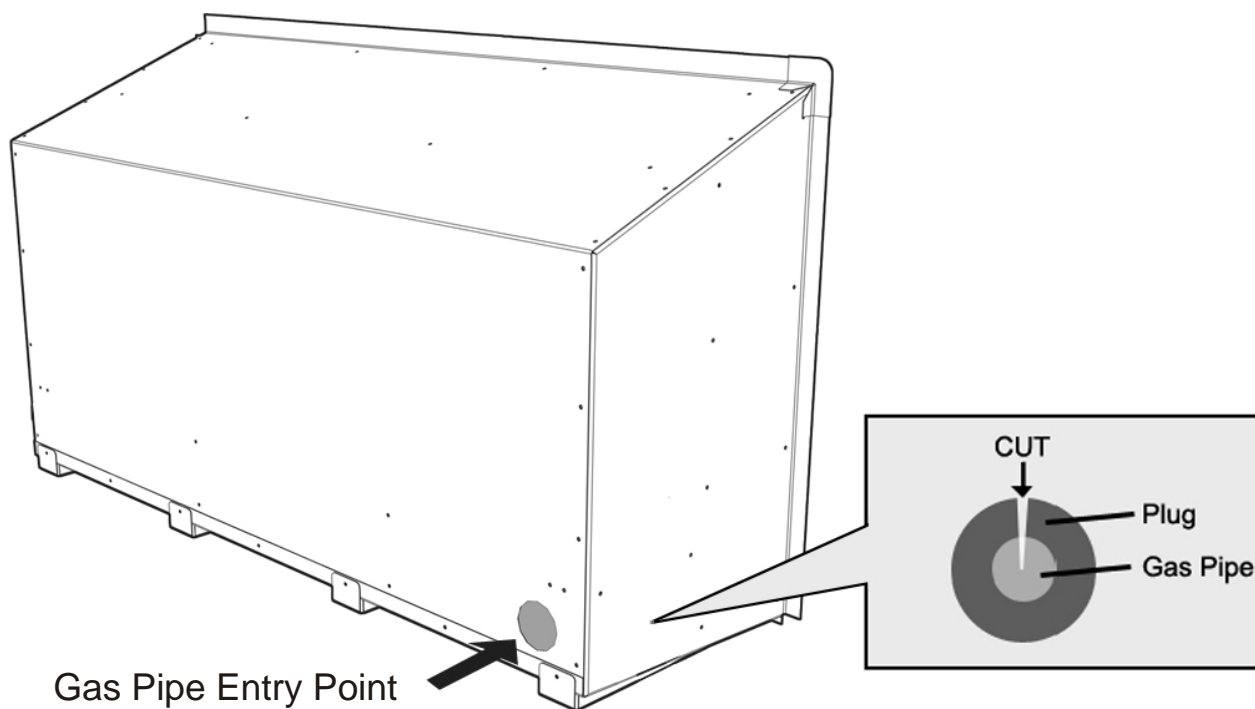
Gas pipe should be sized as per the requirements of AS5601/AG601-2000. The pipe sizing must be sufficient to deliver the following volume of gas to the heater with all other gas appliances in the home running at the same time;

EF5000 Natural Gas = 52 Mj/hr

EF5000 Propane = 40 Mj/hr

It is highly recommended to install an easily accessible isolating shut off valve (ball valve) along the gas line to the EF500 unit which should be easily accessible to the user.

- 8.1 This fire has been supplied with a ½" pipe connected through a short 45° flare nut inlet connection to make the gas supply easy and safe. Solid pipe should be run to the inside lower left hand side of the fire. Insert the supplied rubber plug and cut it as shown below to allow the gas pipe and the electrical cable to pass through, keeping the plug as air-tight as possible.



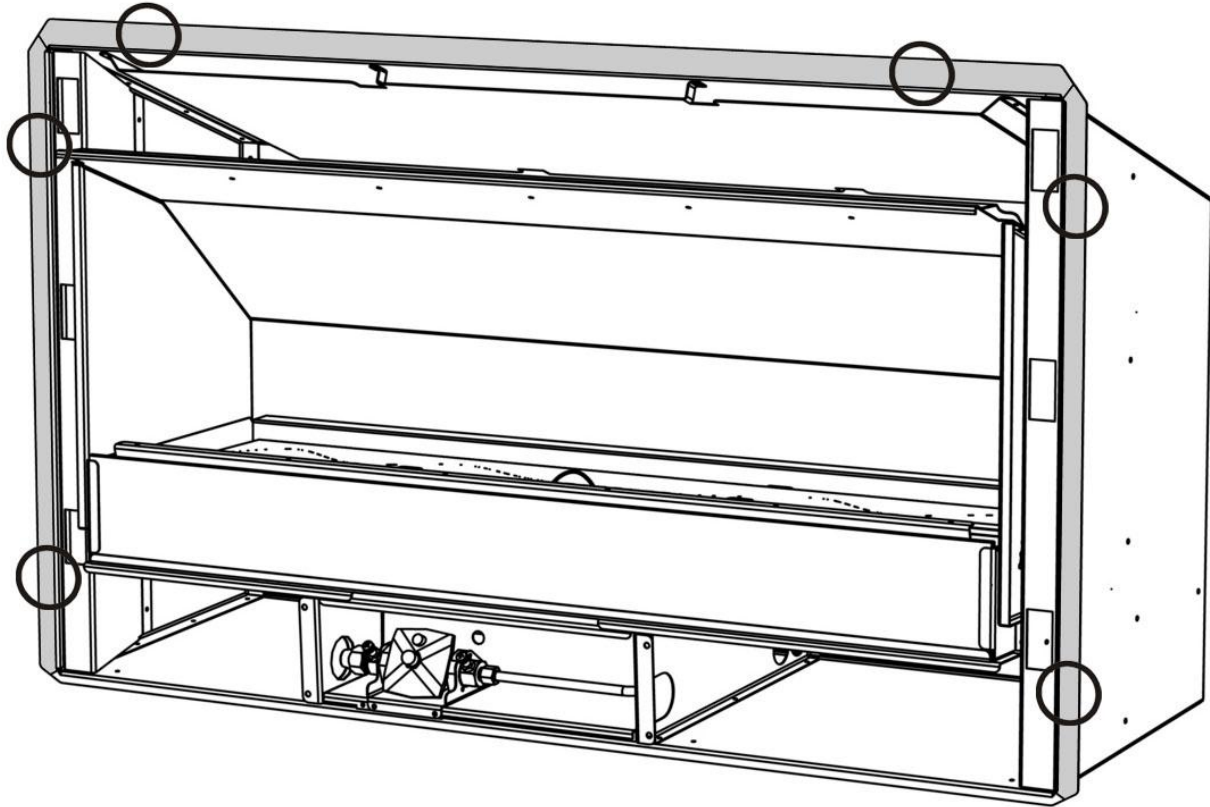
- 8.2 Any flexible pipe should be attached to the copper supply pipe and joint tested to ensure gas tightness, an isolating valve is recommended for this purpose.
- 8.3 Before each use of the appliance the hose assembly connecting the appliance to the gas supply must be inspected. If there is evidence of excessive abrasion or wear, or if the hose is damaged, then the hose assembly must be replaced before the appliance is operated.
- 8.4 The gas hose should be properly located away from pathways or areas where the hose may be subject to accidental damage.

9.0 Fixing the fire into the cavity:

To fix the fire to the cavity, first drill 4 to 6 (5mm diameter) holes in the *outer flange* (as shaded grey in the picture below) in locations which will give you the most support from the cavity framework behind and evenly spaced around the flange. Using the supplied Stainless Steel screws, fasten the fire to the cavity through these drilled holes.

Ensure that the fire is securely located and free from movement.

Suggested location for screws of mounting:



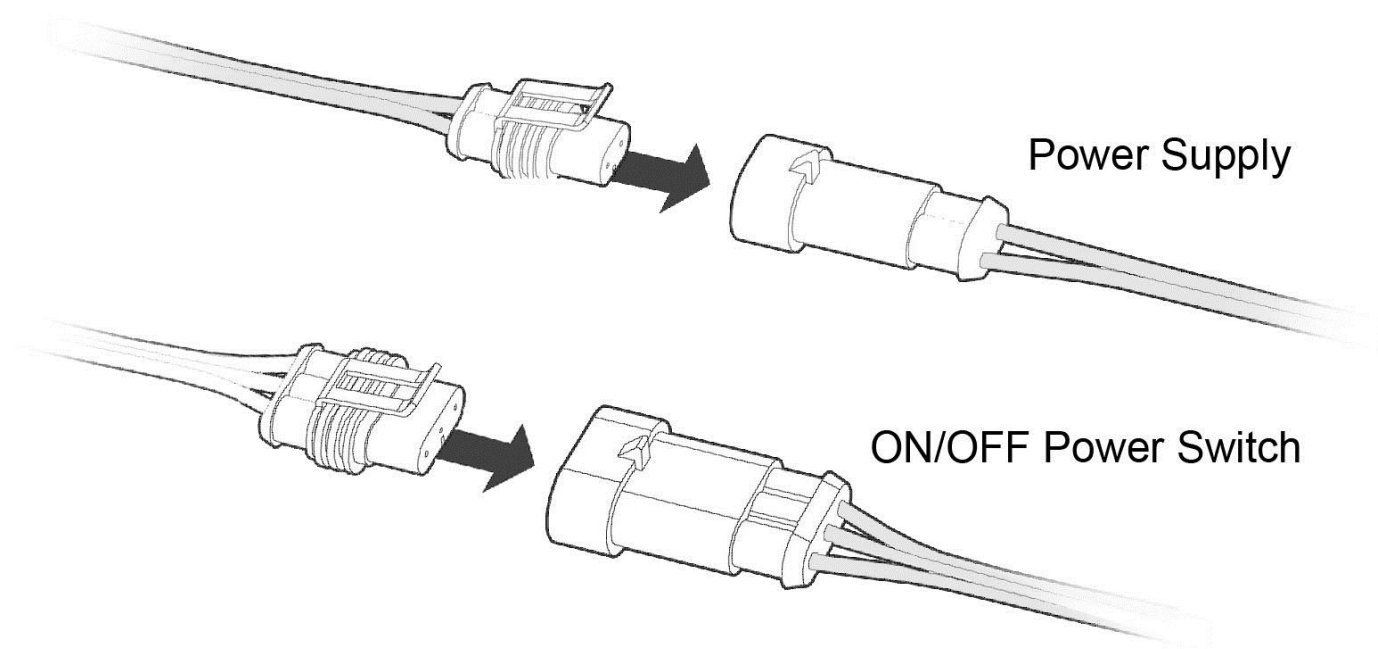
10.0 Connecting the Gas Pipe:

When the fire unit has been pushed into position and secured the flexible hose can be connected to the inlet side of the appliance regulator at the front center of the fire. The hose and pipe assembly should have been tested prior to this as per section 8.2

- 10.1 No matter which connection the installer chooses, the regulator that is supplied in the fire **MUST NOT BE REMOVED**. Removal of the regulator, or replacing it with one not intended for use with an Escea EF5000, will void the limited appliance warranty.
- 10.2 The EF5000 must be disconnected from the gas supply piping system during any pressure testing of that system at test pressures in excess of ½ psi (3.5 kPa).

11.0 Connecting the power supply and power switch:

- 11.1 The Power Supply socket is located in the centerline of the fire, below the firebox, facing the right hand side behind the ignition tray. Push the 2 pin plug together until they 'click'.
- 11.2 The ON/OFF Power Switch socket plugs into the 3 pin plug lead situated at the front RH side of the fire. Push them together until they 'click'.



12.0 Testing of the power switch and spark ignition:

*IMPORTANT: Before the operating pressure can be checked and the fascia fitted,
The power switch and spark ignition must be tested.*

- 12.1 This can be done with the gas supply either turned on or off.
With the power supply and power switch connected, Lean the fascia Right end up beside the fire and run through the steps for igniting the pilot (refer to section 17.0 for instructions).

13.0 Checking Operating Pressure:

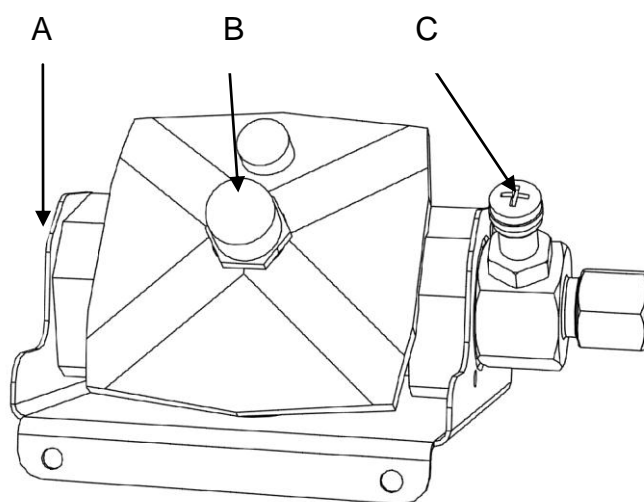
This is done at the regulator located at the lower front of the appliance.

- 13.1 This must be done before fascia has been fitted.
- 13.2 Pressure test point available for operating pressure (as shown below).
- 13.3 The operating pressure has been factory set. Please check that the operating pressure is exactly as listed below and if not, adjust screw in centre of regulator until pressure is correct. If unable to do this, reassess the inlet gas pressure / pipes.
- 13.4 Replace operating test point screw and leak test test point.
- 13.5 Test for overall soundness using soapy water, or other appropriate method.

A = Inlet gas connection

B = Pressure adjustment screw

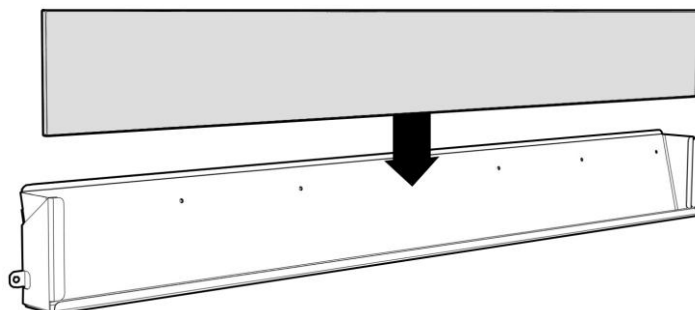
C = Operating pressure test point



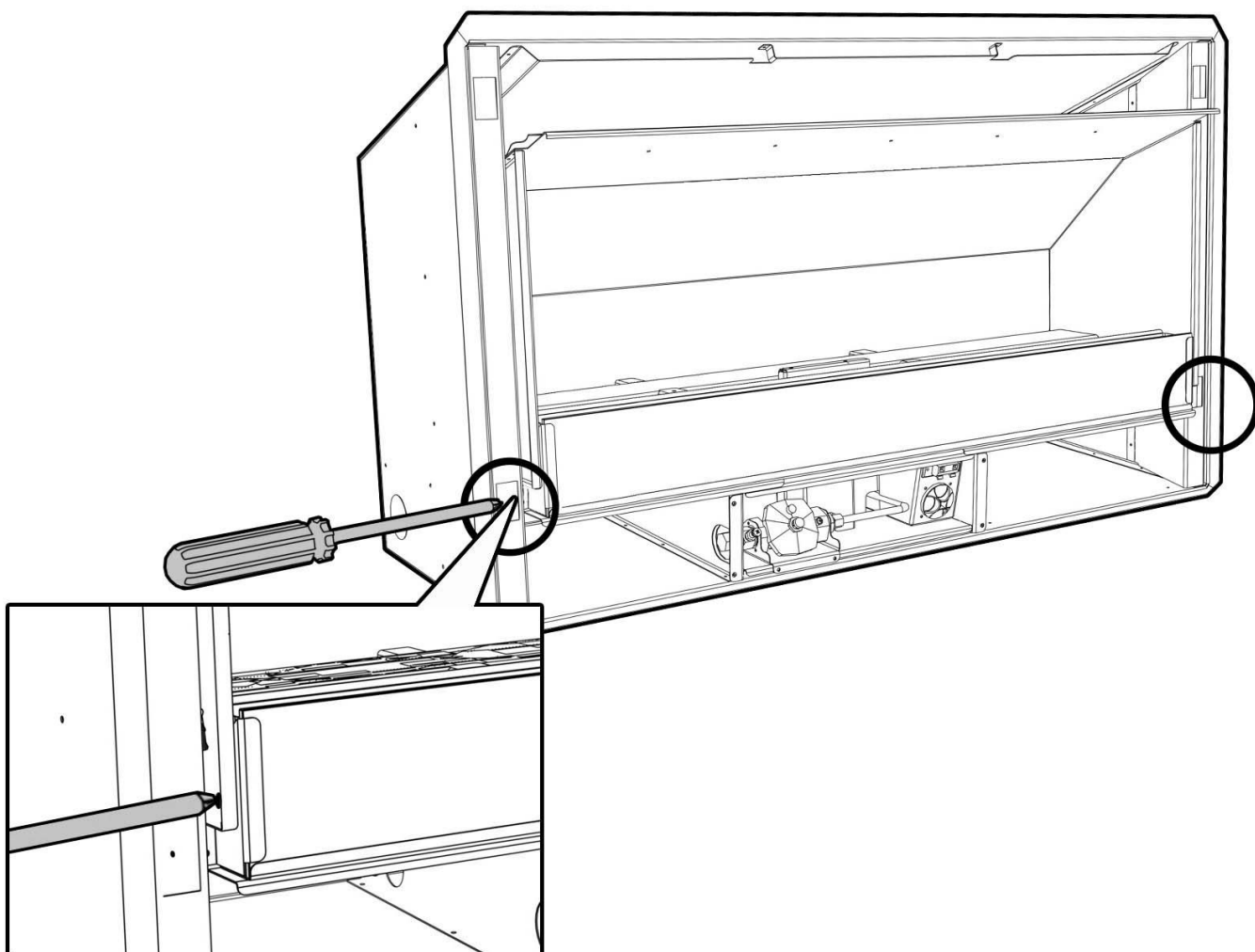
EF5000 Pressure table		
	LPG	Natural Gas
Minimum Inlet pressure	2.5 kPa	1.0 kPa
Maximum Inlet pressure	5.0 kPa	5.0 kPa
Operating Pressure	2.0 kPa	1.0 kPa

14.0 Assembly of stone cartridge:

The glass which fits inside in the stone Cartridge has been packaged to protect it during transit, and can be found inside the firebox. Insert the glass strip into the stone cartridge as shown to the right, between the two metal flanges and push it all the way to the bottom. A bag of pebbles (River Stones) are also supplied, use these to fill the stone cartridge.



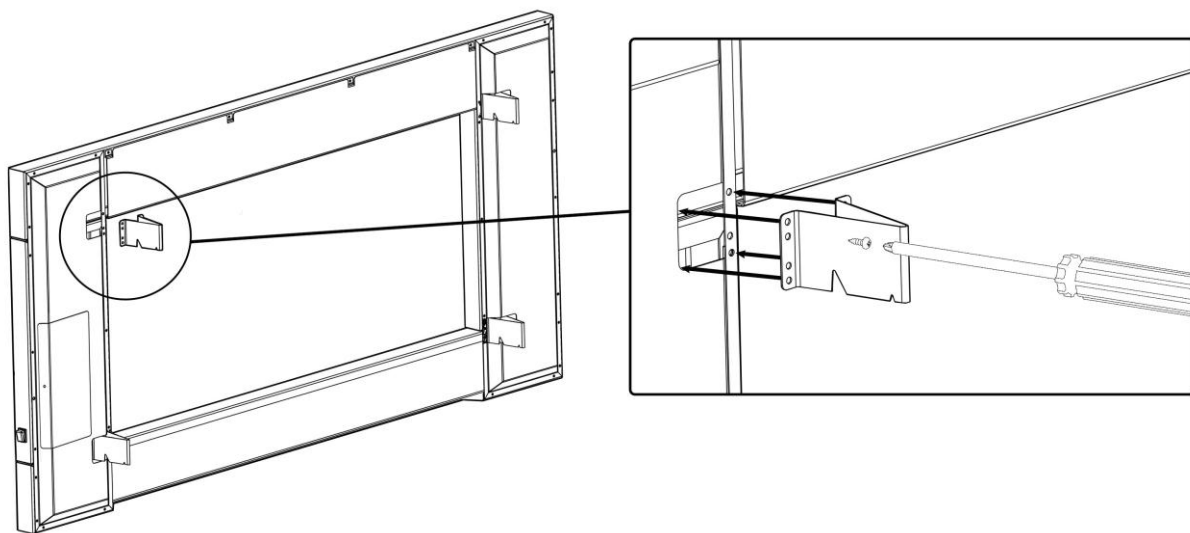
- 14.1 With the glass in position, fix the stone cartridge to the fire by using the two supplied screws in the location shown below. Do this before the fascia is fitted.



15.0 Fitting the Fascia:

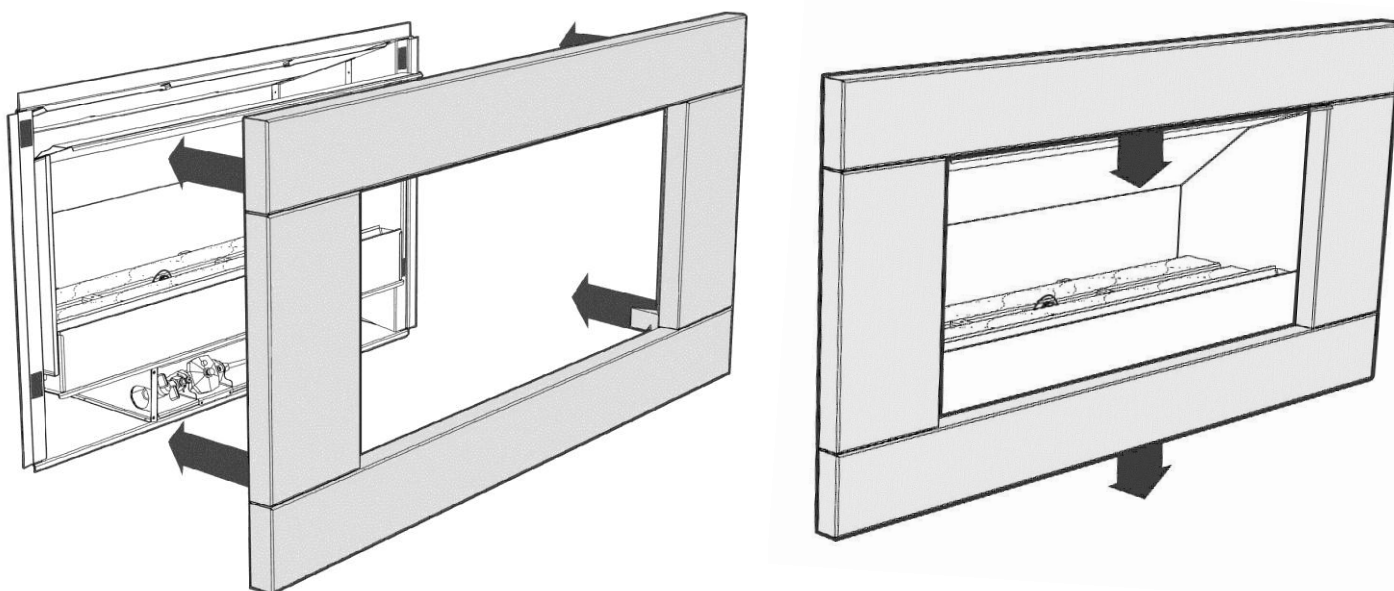
Before fitting the fascia, the hooks must be attached using the screws supplied. Ensure the wires connecting the fascia to the fire are securely connected, as per section 11.0.

The EF5000 fascia is attached to the combustion box by four 'hooks' on the corners of the fascia.



Line up the hooks with the receptacles on the Outdoor Fire pictured below, and push the fascia into position. The first slot in the hook can be used to hang the fascia in the receptacles in order to ease the attachment.

- 15.1 When you have pushed the fascia in as far as it will go, briefly push down on the fascia to secure the fascia into position.



16.0 Placement of ceramic stones:

EF5000 fuel beds should be evenly spread out with a maximum one layer of media. Do not heap or mound the fuel bed media and attempt to get an even spread across the top of the burners.

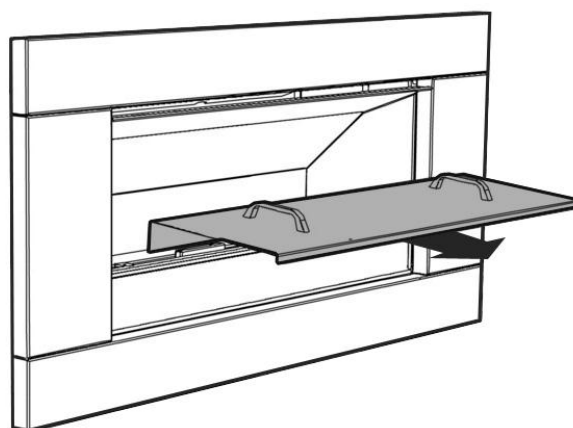
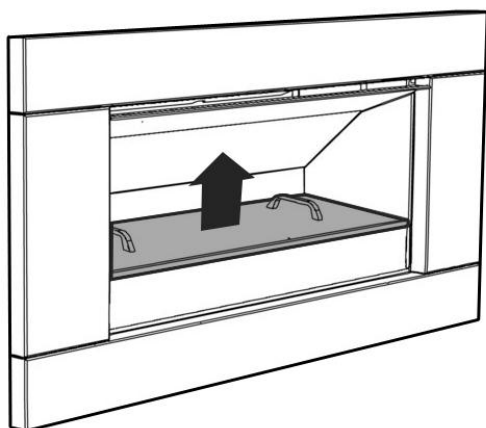


Ceramic
stones

River stones

**UNDER NO CIRCUMSTANCES SHOULD THE SUPPLIED
SMALL STONE PEBBLES (RIVER STONES) BE PLACED ON THE BURNERS.
THEY ARE FOR USE INSIDE THE STONE CARTRIDGE ONLY**

- 16.1 The Weather Cover supplied protects the stones and burners. This must be replaced when while the fire is not in use.
- 16.2 To fit the weather cover ensure fire is off and cooled, and place the front edge on the glass at the front of the fire, the rear flange of the Weather Cover will rest on the burner supports behind the rear burner. To remove, lift the Weather Cover upwards and then towards yourself.

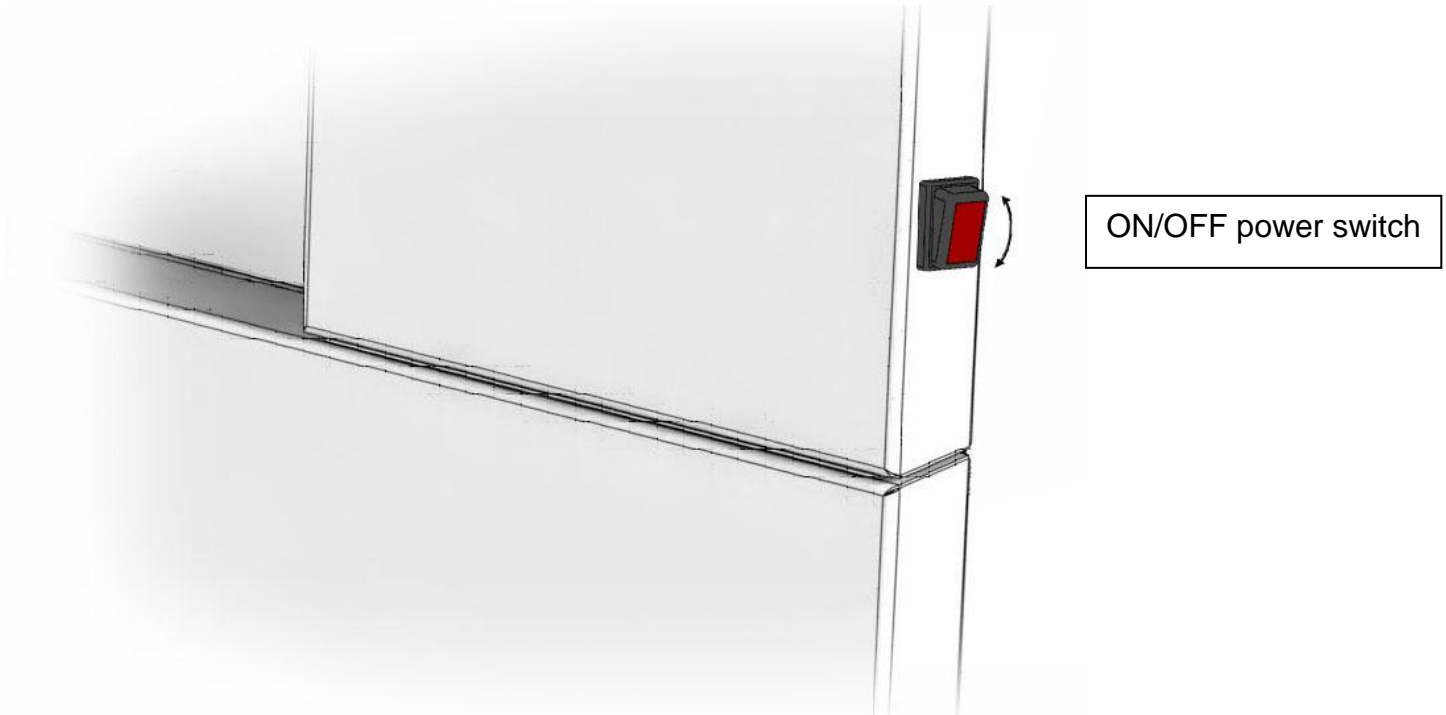


- 16.3 The fire MUST NOT be operated while the cover is fitted.
- 16.4 The cover MUST NOT be fitted while the fire is hot. A cooling period of 30 minutes must be observed before fitting.
- 16.5 Objects such as wood, coal, fire logs or any other solid fuels shall not be burned in the gas fireplace.
Under no circumstances should any part of your body enter the gas fireplace during the start-up or whilst the fire is running.

17.0 Operating Instructions:

The EF5000 is operated by the switch located on the right hand side outer edge of the fascia. The basic operations possible are ON/OFF.

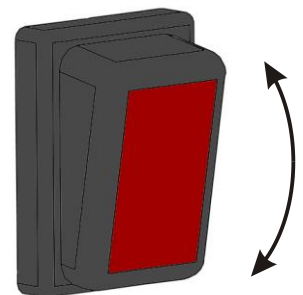
Before operating the fire, ensure the power transformer is plugged into the mains wall socket & turned on, and the supply is turned on.



17.1 Igniting the pilot flame

To turn the fire on push the ON/OFF rocker switch to the on position. The ignition unit will start sparking and the pilot and burners will ignite almost immediately.

In the event of no gas, the ignition unit will attempt to try to light up to 3 times before shutting down.

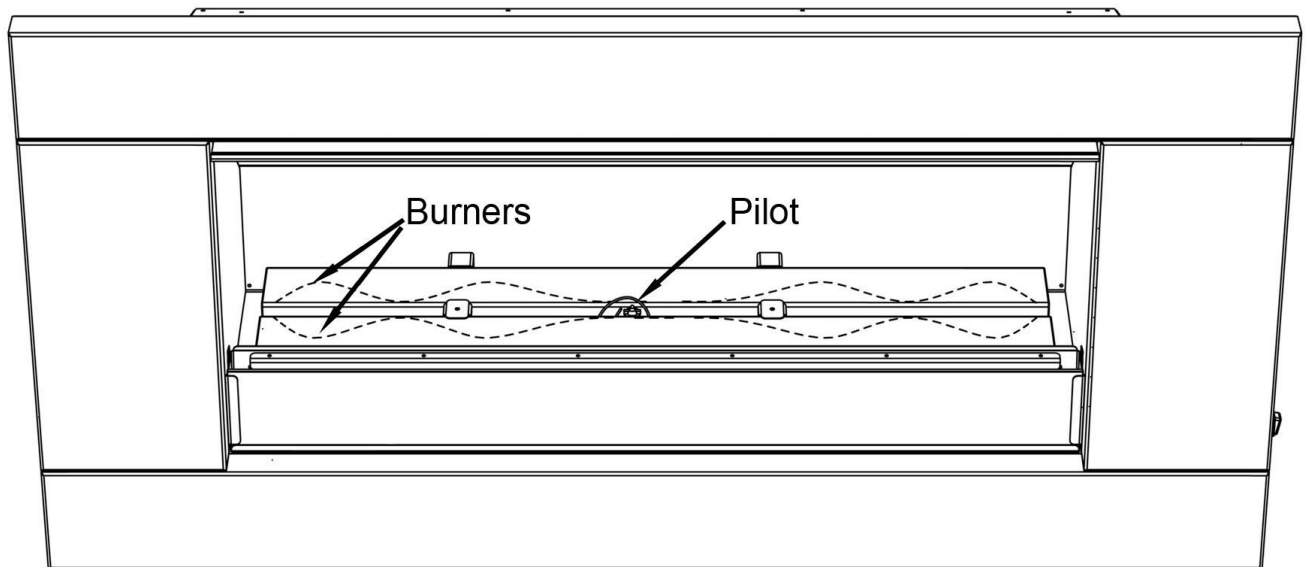


17.2 Turning off the fire

To turn the fire off, simply flick the ON/OFF rocker switch to the off position. This will shut down the gas flow to the pilot flame and both burners.

Please ensure the gas supply is also turned off, and as an extra safety please turn off the main power supply at the house.

17.3 Pilot Flame and Burner Positioning



18.0 Maintenance and Cleaning

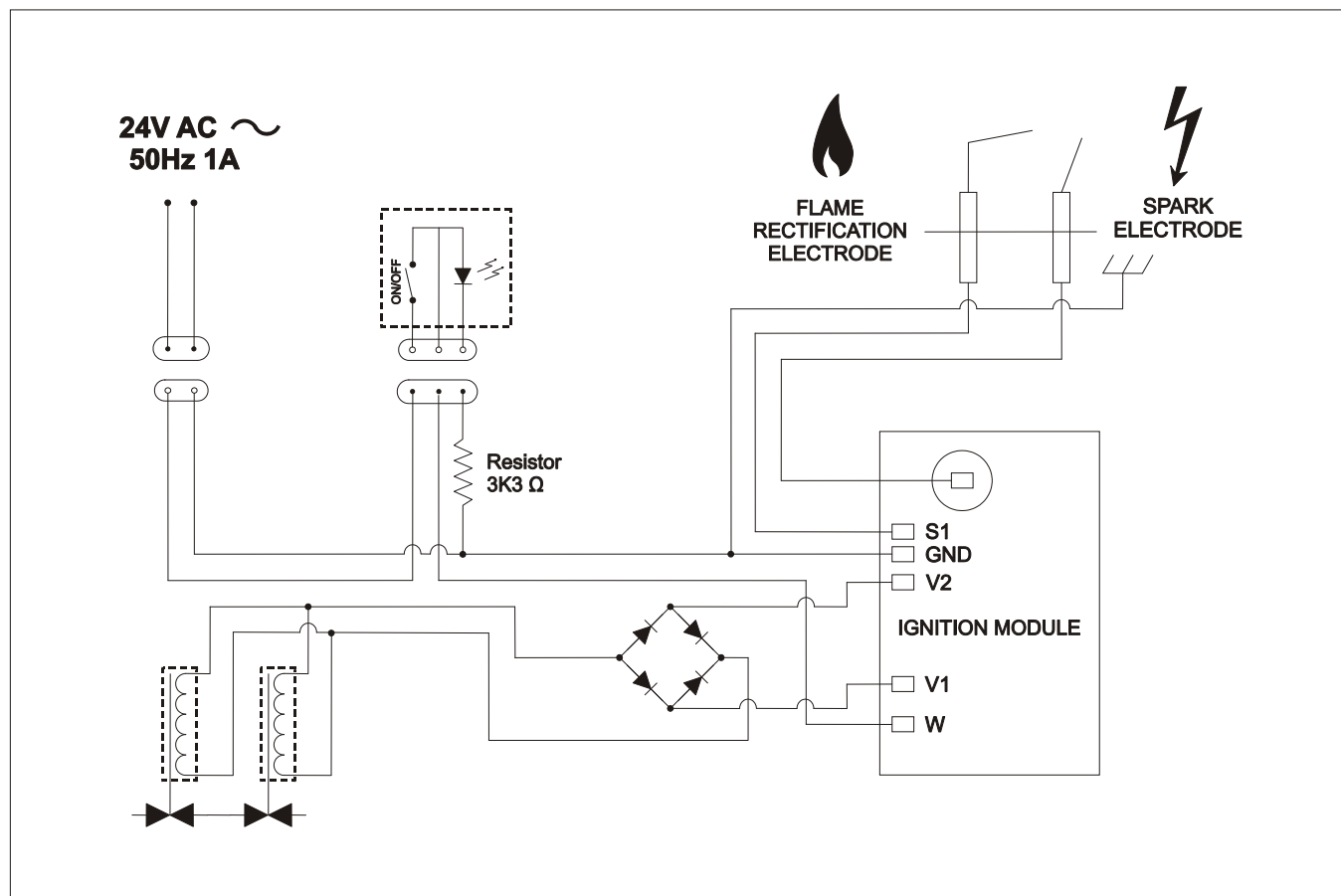
The unit must be cold before starting any form of maintenance or cleaning. To remove the glass and stones in the front stone tray simply reverse the steps in section 15.0. The glass can be cleaned using standard window cleaner and the quartz stones can be washed using soapy water

- 18.1 If the stainless steel fascia or weather cover requires cleaning the following products are recommended; 3M Stainless steel cleaner or methylated spirits.

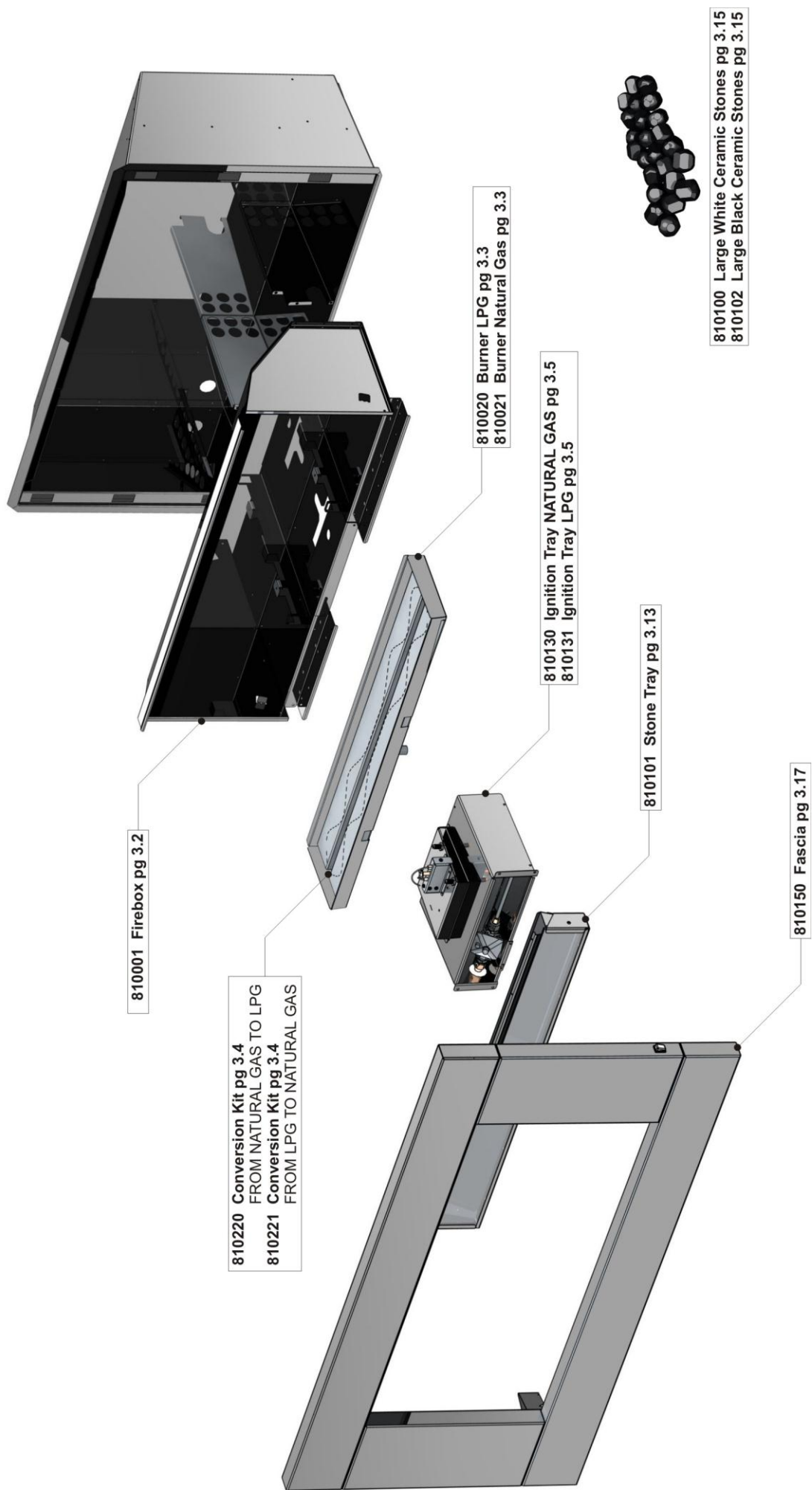
Periodically the pilot and burners should be checked visually for carbon and soot build-up, consistent flame and clean burning.

- 18.2 Cleaning of the burners and ceramic stones can be carried out using a brush and a dry cloth and should be done at least annually. This will remove carbon or soot build-up.

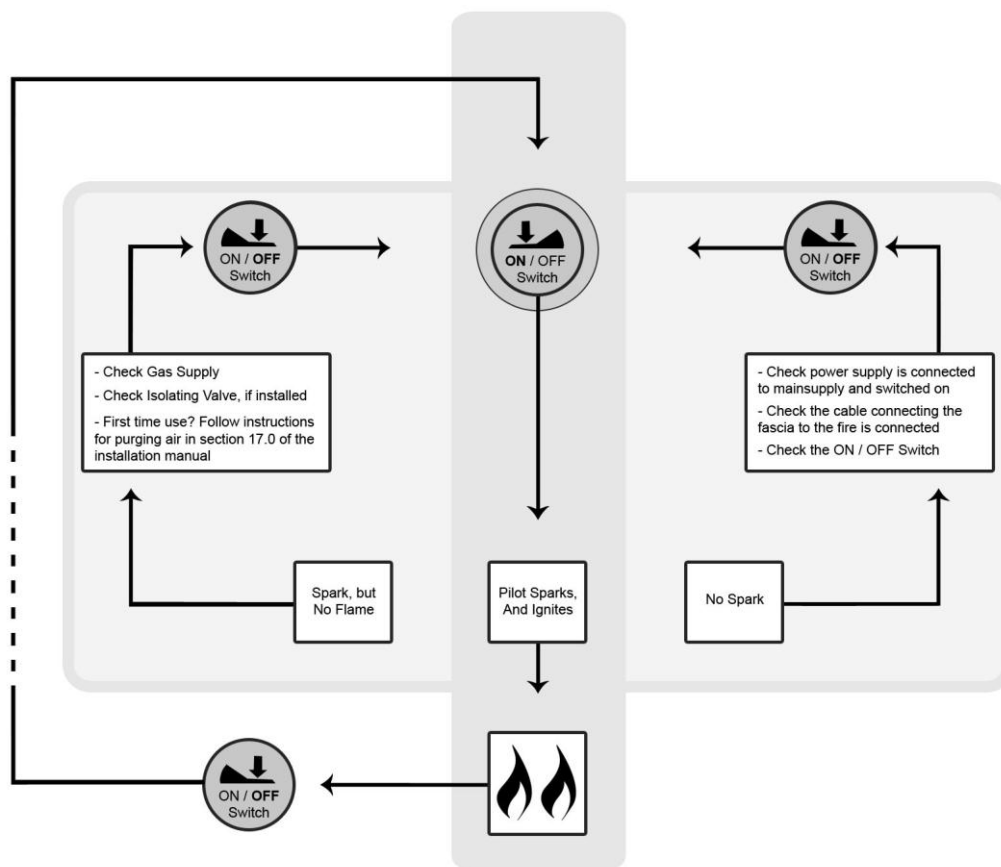
19.0 Electrical Schematic



EF5000 Exploded View



19.1 Operation Chart



	Propane	Natural Gas
Min. Inlet Pressure	2.50 kPa	1.00 kPa
Max Inlet Pressure	5.00 kPa	5.00 kPa
Manifold Pressure	2.00 kPa	1.00 kPa
Front Burner Jet Size	1.4	3.2
Rear Burner Jet size	1.4	3.2
Front Burner Aeration Hole	11mm x 2 off per burner	5mm x 1 off per burner
Rear Burner Aeration Hole	11mm x 2 off per burner	5mm x 1 off per burner
Mj/hour	40	52

For any inquires, please contact your local Escea distributor or dealer www.escea.net

20.0 Escea Product Warranty

1 This document sets out the express warranties that apply in respect of Escea products purchased in either:

- (a) Australia with the exception of Western Australia, provided by Glen Dimplex Australia Pty Limited ABN 69 118 275 460 of Unit 2, 205 Abbots Road, Dandenong, Victoria 3175 (Phone number 1300 556 816) (**we, us our**).
- (b) Western Australia, provided by Airgroup Australia of 28 Division Street, Welshpool, Perth, WA 6106 (Phone number 893 502 200) (**we, us our**).

The express warranties in this document apply to the particular Escea product which this warranty card has been included in the packaging for or otherwise supplied with (**the Escea product**).

2 Escea express warranty

Subject to the exclusions in section 3, we warrant under this express warranty that the below parts of the Escea product will be free from defects of materials or workmanship for the periods specified below (with each of the below periods commencing on the date the Escea product was purchased by you as a brand new product from a retailer located in the regions outlined in section 1):

Part	Type of express warranty
Firebox and Heat Exchanger	10 years parts and labour warranty*
All other parts	1 year parts and labour warranty followed immediately by 1 year parts only warranty*

** Where a Escea product is covered by a parts and labour warranty, the warranty covers both the repair of the defective part or the provision of a spare part to replace the defective part and the installation of that part.*

*** Where a Escea product is covered by a parts only warranty, the warranty covers only the repair of the defective part or the provision of a spare part to replace the defective part and does not include the removal of the defective part or the installation of the repaired or replaced part.*

This express warranty is personal to the first person who acquires the Escea product from the relevant retailer and claims under this warranty cannot be made by anyone other than this person.

The benefits conferred by this express warranty are in addition to the Consumer Guarantees referred to in section 4 and any other statutory rights you may have under the Australian Consumer Law and/or other applicable laws.

3 Warranty exclusions

This express warranty does not apply where:

- (a) the Escea product has been installed, used or operated otherwise than in accordance with the product manual or other similar documentation provided to you with the Escea product;
- (b) the Escea product requires repairs due to damage resulting from accident, misuse, incorrect installation, cleaning or maintenance, unauthorised modification, tampering or unauthorised repairs by any persons, use of defective or incompatible accessories or exposure to abnormally corrosive conditions;
- (c) the defective part relates to a consumable part of the Escea product which require routine replacement;
- (d) you are unable to provide us with reasonable proof of purchase for the Escea product;
- (e) the breakdown occurs after the expiry of the express warranty period set out in section 2; or
- (f) the Escea product was not purchased in any of the regions outlined in section 1 as a brand new product.

4 Consumer Guarantees

Our goods come with guarantees that cannot be excluded under the Australian Consumer Law. You are entitled to a replacement or refund for a major failure and for compensation for any other reasonably foreseeable loss or damage. You are also entitled to have the goods repaired or replaced if the goods fail to be of acceptable quality and the failure does not amount to a major failure.

5 How to make a claim

You may make a claim under this warranty by contacting us by:

For Australia with the exception of Western Australia, visiting www.glendimplex.com.au, contacting our customer care line (1300 556 816) or visiting a Glen Dimplex service centre.

For Western Australia, visiting www.airgroup.com.au, contacting us on 8 9350 2200.

To make a valid claim under this warranty, you must:

- (a) lodge the claim with us as soon as possible and no later than 14 days after you first become aware of the breakdown;
- (b) provide us with the Escea product serial number;
- (c) provide us with reasonable proof of purchase for the Escea product; and
- (d) if required by us, provide us (or any person nominated by us) with access to the premises at which the Escea product is located at times nominated by us (so that we can inspect the Escea product).

6 Warranty claims

If you make a valid claim under a parts and labour warranty and none of the exclusions set out in section 3 apply, we will, at our election, either:

- (a) repair the relevant part of the Escea product; or
- (b) replace the relevant part of the Escea product with a product of identical specification (or where the product is superseded or no longer in stock, with a product of as close a specification as possible).

We will also arrange for the relevant repaired or replacement part to be installed at no charge to you.

If you make a valid claim under a parts only warranty and none of the exclusions set out in section 3 apply, we will, at our election, repair or replace the relevant part. You acknowledge that installation is not covered under a parts only warranty, however, we may, for a fee, install the repaired or replacement part for you. We will, on request, provide you with a quote for the installation of the repaired or replacement part.

Goods presented for repair may be replaced by refurbished goods of the same type rather than being repaired. Refurbished parts may be used to repair the goods.

Escea products are designed and supplied for normal domestic use. We will not be liable to you under this warranty for business loss or damage of any kind whatsoever.

7 Costs of warranty claim in Australia (excluding Western Australia)

Where you make a claim under this warranty, an authorised repairer may need to attend your premises to inspect the Escea product. We may charge you a service call fee if a repairer will be required to travel more than 30 kilometers from the nearest Glen Dimplex service centre to your location. You may obtain details on the location of our service centres and our service call fees by visiting our website (www.glendimplex.com.au) or calling our customer care line (1300 556 816).