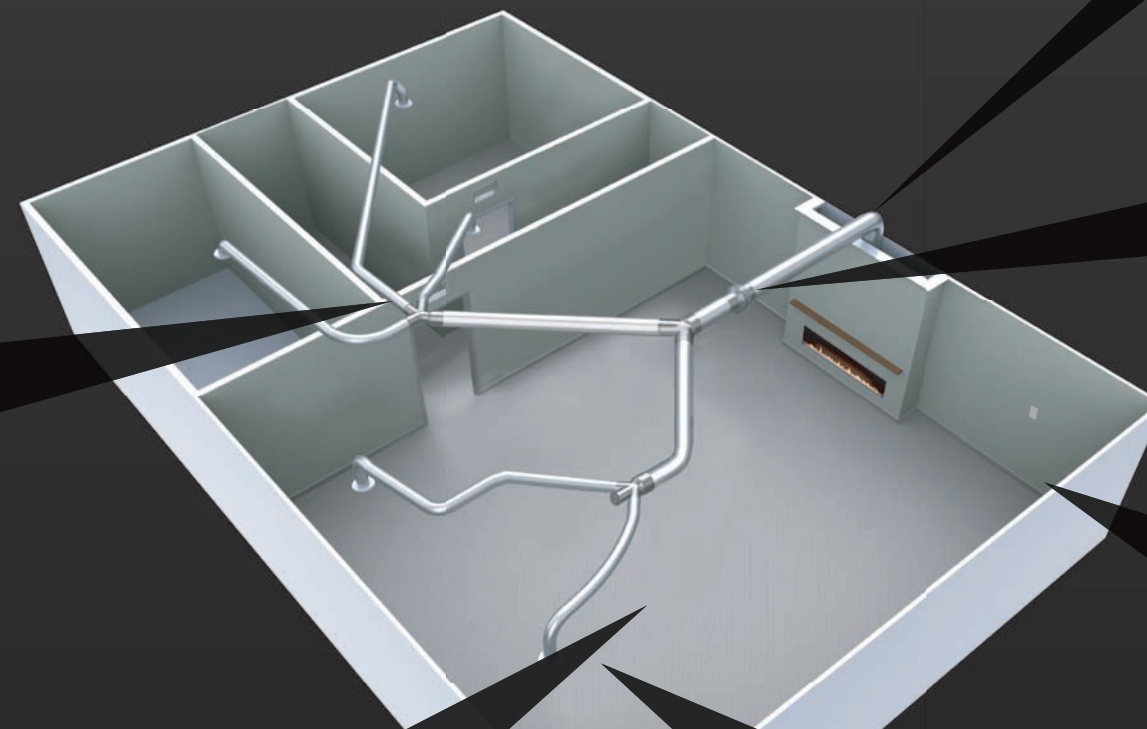
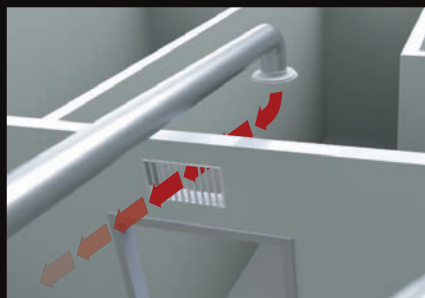


Escea luxury fireplaces have a very large number of installation options, this Design Guide explains how to use the ducting feature of the DX Series of fireplaces to distribute heat from the fireplace throughout the home.

The dimensions and specifications shown here are recommendations, and in most cases these can vary to suit your installation. For more detailed information on minimum/maximum dimensions, view the installation manual available on our website: www.escea.com/technical



Backflow



When placing outlets in rooms other than the room the appliance is installed, it is important to allow for back flow to equalise pressure between the rooms, and to allow for temperature regulation.

CAUTION: NEGLECTING TO ALLOW BACKFLOW OF RETURN AIR TO THE FIREPLACE CAN RESULT IN A RISK TO PERSONAL SAFETY TO INFANTS OR INFIRM PERSONS

WARNING: OVERHEATED ROOMS ARE NOT SAFE FOR INFANTS

If ducting is installed into a room used by an infant or the infirm, ensure the temperature stays in the range of 16-20°C by use of a thermostatically controlled shut off valve in the duct that feeds that room.

Ceiling-space Ducting

The DX1500 is supplied with an in line centrifugal room air fan to distribute heat to a minimum of 3 x 150mm outlets.

As well as travelling upwards and sideways, ducting can travel under (and have outlets on) the floor.

Fan Placement

It is recommended to place the fan in an area in which its noise will not interfere with daily activities, such as a garage roofspace, or laundry room, or even under the floor if the house has a basement.

If it is not an option to place the in line fan away from the fireplace it can be mounted in the cavity above the fireplace, however is recommended that sound proofing insulation be used to minimise any fan noise.

Access to the fan must be provided for maintenance purposes

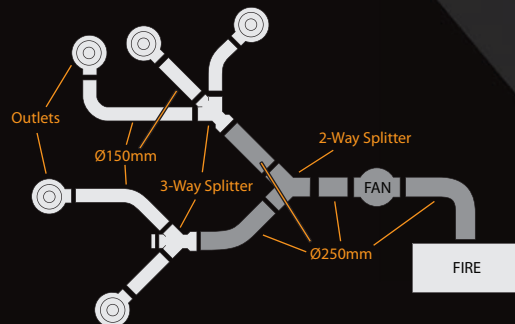
Remote Placement

The remote contains an integrated temperature sensor, and is the thermostat for the fireplace. The cradle for the remote is best installed at around chest height, away from drafts and direct sunlight, but in an easy to access location for the user.

Ducting

The dimensions and specifications shown here are recommendations, and in most cases these can vary to suit your installation. For more technical information on ducting, view the installation manual available on our website: www.escea.com/technical

Typically, having more ducts will reduce the noise of moving air.



No. of Ducts	DX1000	DX1500
Minimum	3	3
Maximum	5	8

Ducting Outlet Placement

In order to distribute heat evenly through the room, place the Ducting Outlets in the corners of the room furthest from the fireplace. This will ensure the entire room is warm.

Place the outlets for even heat distribution to each room that is to be heated. The DX1500 also emits radiant heat through the glass, so this can be taken into account when deciding on ducting outlet locations.

Note: More than half of the duct outlets should terminate into the same airspace as the fireplace is located in.

