

Packing List

- Log Set (Rear Log, Left Log, Right Log, Left Twig, Right Twig, Ember Chunk)
- Platinum Crushed Glass (in 2-portion bag)
- Bronze Crushed Glass (in 2-portion bag)
- Cobalt Crushed Glass (in 2-portion bag)

Installation Warnings

- **The logs are fragile, especially after being exposed to heat.**
- Make sure the gas control valve is OFF and the heater is cool prior to conducting service.
- Failure to position the parts in accordance with these diagrams or failure to use only parts specifically approved with this appliance may result in property damage or personal injury.
- The burner must be correctly positioned before installing the log set. Make sure the burner is fully seated and the pilot is properly aligned. See owner's manual for details on burner removal.

HINT: If using propane (LP), convert the appliance before installing the log set.

If using firebacks, make sure they are installed before installing the log set.

Log Set Installation

1. Place the rear log so the two holes on the bottom of the log fit over the pins on the burner. The log rests against the back wall or fireback.

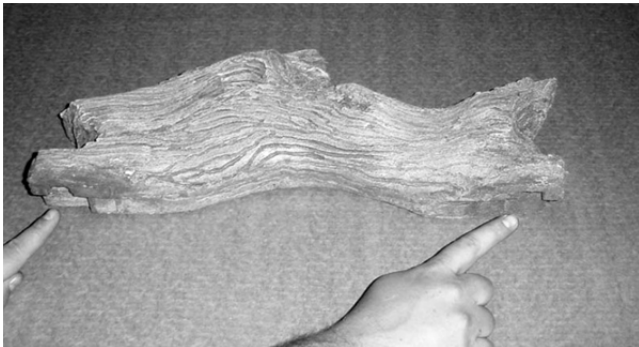


Figure 1: Rear Log

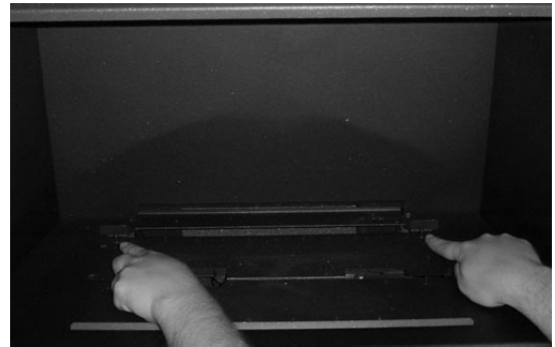


Figure 2: Rear Log Placement

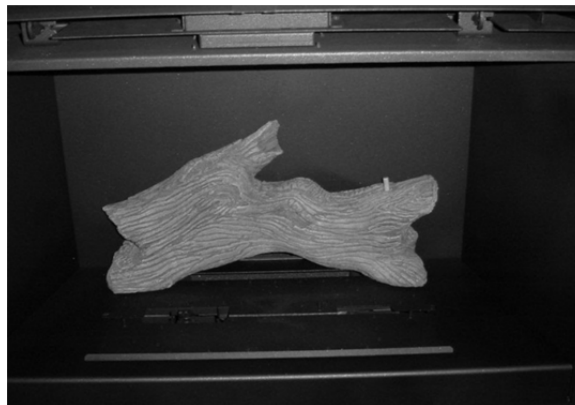


Figure 3: Rear Log in Place



31 DVI / 564 HO Driftwood Log Set Installation Instructions (sku 94500548)

- Place the left log as shown below. Note how the two pins on the burner insert into the holes on the log. Make sure the log is pushed all the way back.



Figure 4: Left Log

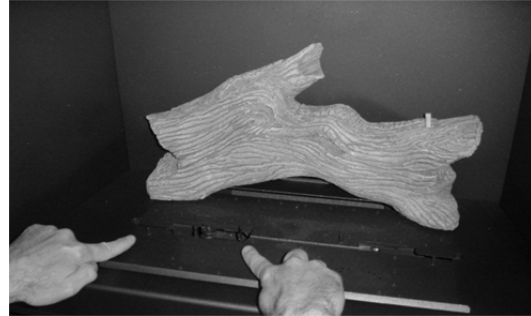


Figure 5: Left Log Placement



Figure 6: Left Log in Place

- The right log as shown below. Note how the two pins on the burner insert into the holes on the log.

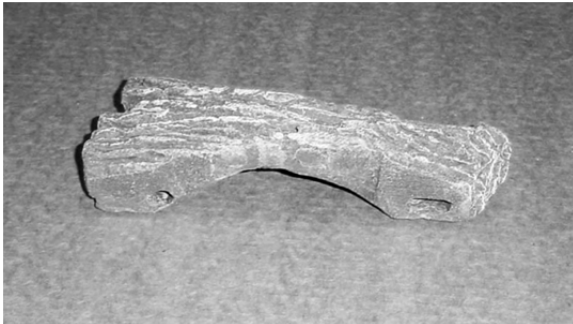


Figure 7: Right Log

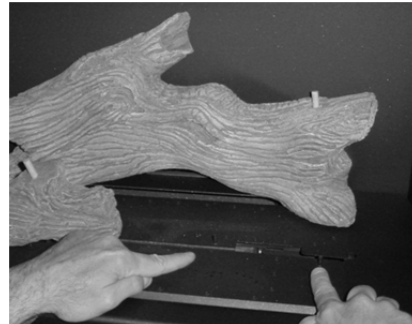


Figure 8: Right Log Placement



Figure 9: Right Log in Place



31 DVI / 564 HO Driftwood Log Set Installation Instructions (sku 94500548)

- Place the left twig as shown below. Note how the hole on the twig inserts over the pin on the left log and rests on the ember tray. When installed, the twig should have a space of about 1 inch from the rear log.

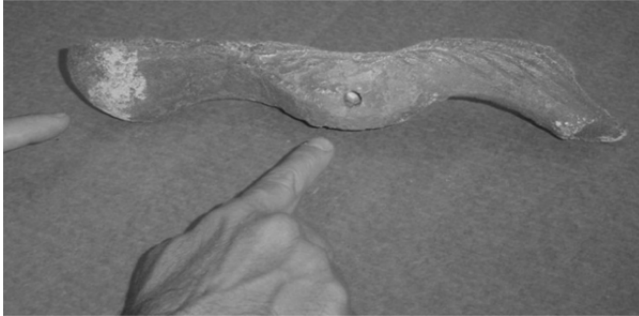


Figure 10: Left Twig

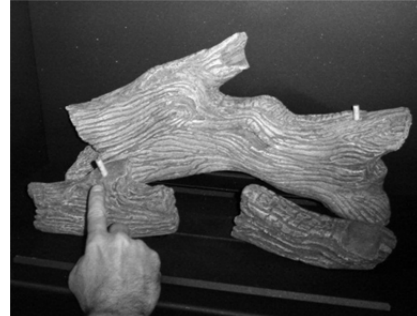


Figure 11: Left Twig Placement

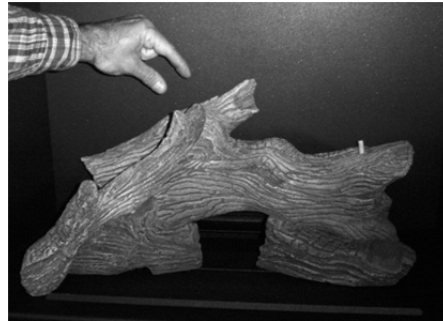


Figure 12: Left Twig in Place

- Place the right twig as shown below. Note how the hole on the twig inserts over the pin on the rear log and rests on the flat portion of the right log.



Figure 13: Right Twig



Figure 14: Right Twig Placement



Figure 15: Right Twig in Place



31 DVI / 564 HO Driftwood Log Set Installation Instructions (sku 94500548)

- Place the ember chunk on the burner as shown below. Make sure the ember chunk does not cover any of the burner holes.

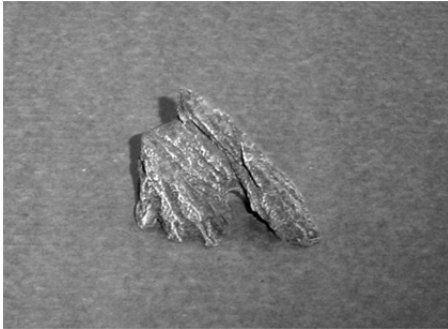


Figure 16: Ember Chunk



Figure 17: Ember Chunk in Place

Crushed Glass Installation

Three colors of crushed glass are included with this set to allow for different shading options. Each color of glass comes in a two-portion bag (labeled "A" and "B") to accommodate the differences between the 31 DVI and 564 HO burner.

31 DVI: Use one only the "A" portion of one bag (the smaller portion).

564 HO: Use the "A" portion on the burner. Use the "B" portion on the side media shelves.



Figure 18: Crushed Glass



31 DVI / 564 HO Driftwood Log Set Installation Instructions (sku 94500548)

Pour the crushed glass onto the burner in a thin, uniform layer.



Figure 19: Pouring Crushed Glass

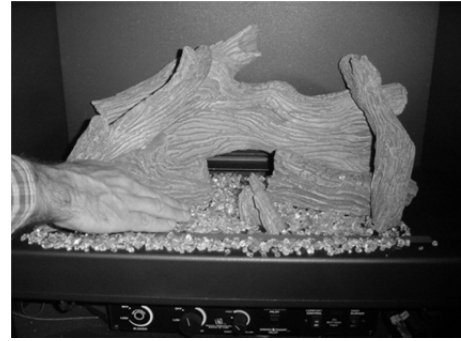


Figure 20: Spreading Crushed Glass



Figure 21: Completed Log Installation

WARNING: Make sure the glass is a maximum 1 layer thick (NG can be up to 2 layers). If the glass is too thick it will impair burner performance and create soot.

WARNING: Make sure the pilot is not covered with glass. Clear away glass, if necessary, to ensure the pilot flame lights the burner quickly.

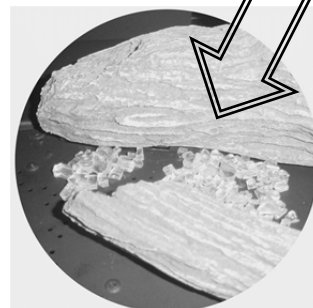
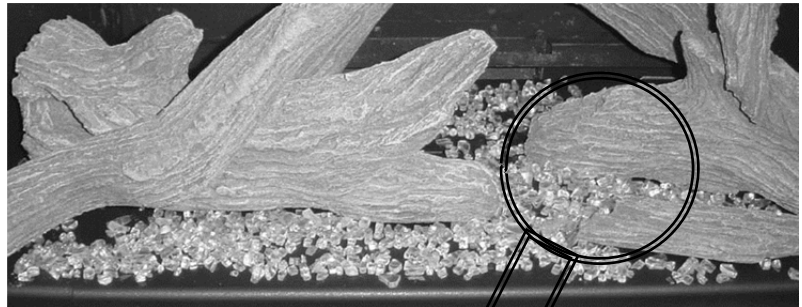


Figure 22: Glass Thickness