

Minimum clearances required for balanced flue terminals or the flue terminals of outdoor appliances

(according to AS5601-2004[AGA gas installation code] or NZS 5261 [New Zealand])

- a

Bellow eaves, balconies or other projections

300 mm
- b

From the ground or above a balcony

300 mm
- c

From a return wall or external corner

500 mm
- d

From a gas meter (M)

1000 mm
- e

From an electricity meter or fuse box (P)

500 mm
- f

From a drain or soil pipe

150 mm
- g

Horizontal from an building structure

500 mm
- h

From any other flue terminal, cowl or combustion air intake

500 mm
- j

Horizontally from an openable window, door, or non-mechanical air inlet, or any other opening into a building, with the exception of sub-floor ventilations

500 mm
- k

Vertically below an openable widow, door,or non-mechanical air inlet, or any other opening into a building, with the exception of sub-floor ventilation

150 mm
- l

Minimum horizontal clearance to any surface (such as an exterior wall) for vertical terminations

610 mm
- m

Minimum height above roof line for vertical termination

600 mm

Using your flexible flue pipe

The Enviro's revolutionary flue system incorporates one 65mm diameter pipe and one 58mm diameter pipe.

Do...

Use 3 bends only

Our flexible flue has the ability to bend 3 times between the heating unit and the cowl. This includes the bend straight out of the heater if you're fluing through the ceiling or floor.

Do...

Make the flue pipe go over the bearers and joists.

You may bend the flue over joists and bearers. It is recommended that a 20mm clearance be maintained between the smaller gas exhaust flue and combustible materials.

Never Do...

Fluing where the pipe had a spot lower than the rest.

Never allow a low spot in the flue. Installing the flue with a dip or "goose neck" can result in reduced efficiency or even prevent the fire from working.

A 20mm clearance is recommended from the extraction (smaller) flue to combustibles.

Key Information – Quick step check list

Plumber	Incoming gas connection provided – 1/2 inch BSP male connector	Page 2
	Gas input – 44MJ high 23MJ low	Page 2
	Manifold pressure High (Nat gas) 0.69 Kpa Low (Nat gas) 0.22 Kpa High (LPG) 2.25 KPA Low (LPG) 0.63 KPA	Manifold pressure is factory set. To check pressure and adjust refer to page 8 of the customer operation information & Installation instructions.
Electrician	Standard flex 2m, 3 pin plug provided. Requires power point with double pole isolation switch.	Page 2

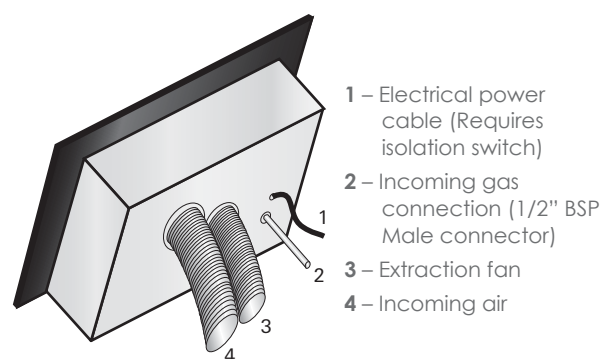
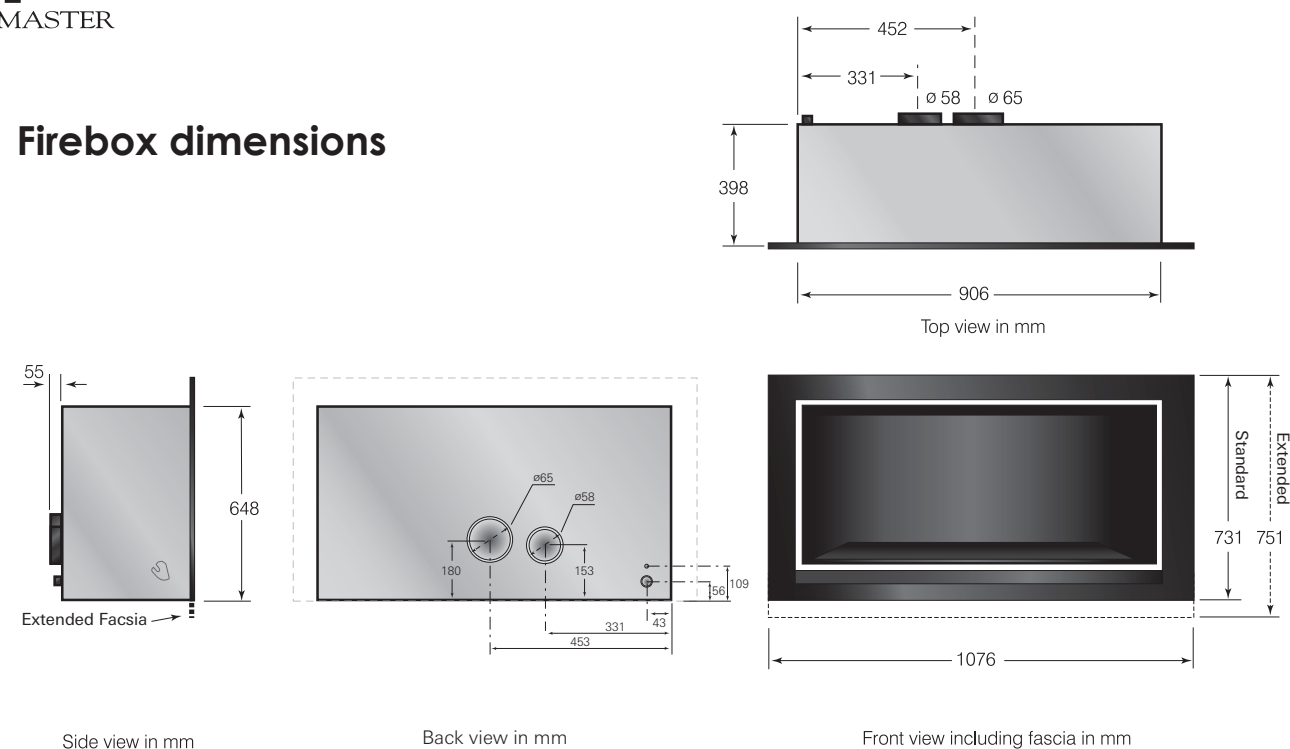
Addition literature

Supplements for flue installation and heat transfer can be obtained by contacting your Heatmaster dealer.

\*All information contained in this mini summary is correct at the time of publication. This is only a summary and should be read in conjunction with the full installation instructions. Pictures are representative only and are not drawn to scale. Installation should be carried out by a licensed gas fitter and any electrical work carried out by a licensed electrician.

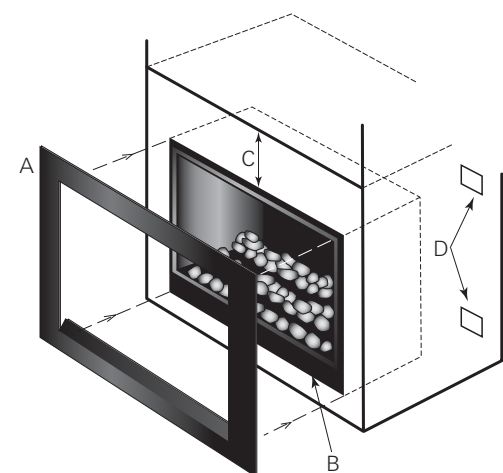
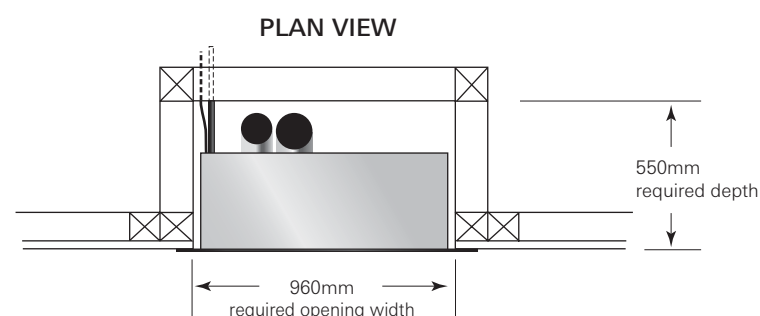


## Firebox dimensions



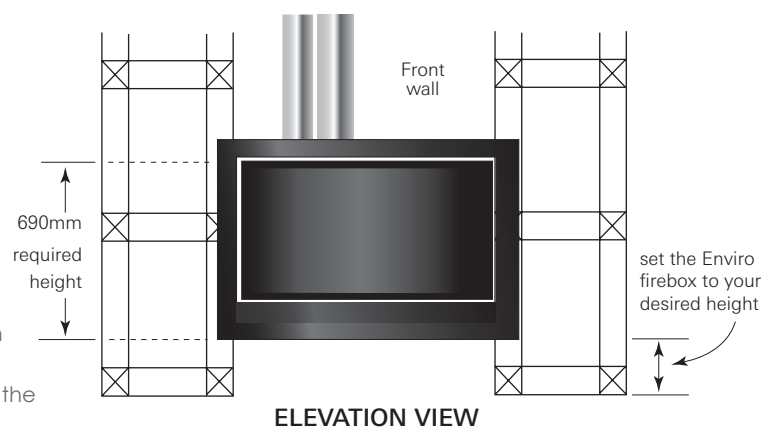
**Gas input**  
High 44 MJ/h Low 23 MJ/h

## Minimum framing dimensions



- A – Fascia attaches to the front of the firebox to finish flush with the wall  
B – Your choice of pebbles, coals or logs placed into the firebox. Do not obscure the gas outlets

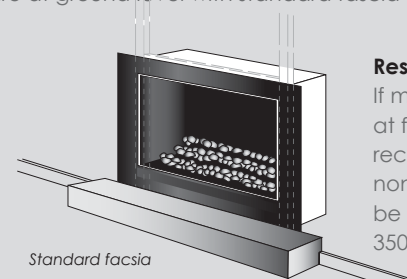
- \* C and D are only applicable if installing under bench top and or into Joinery.  
C – Minimum enclosure height from top of box = 300mm  
D – 1 Inlet and 1 outlet ventilation with a cross sectional area of 5000mm for each.



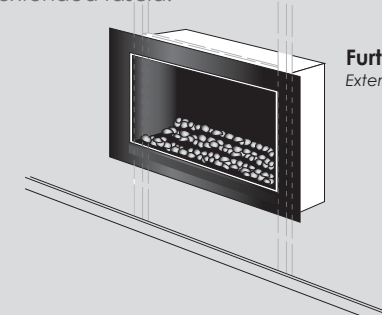
\* Note: Standard Fascia finishes flush with the bottom of the firebox so ensure a neat finish to plaster/gyprock.

## Choice of firebox height

With it's revolutionary design, the Enviro can be mounted at any height on the wall. You can choose to install the Enviro at ground level with standard fascia or further up the wall with extended fascia.

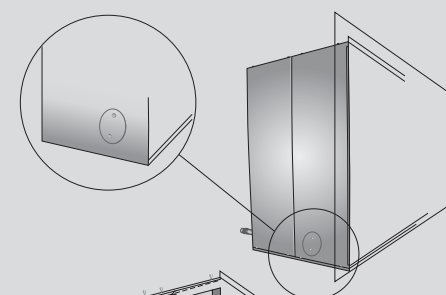


**Resting on the heath**  
If mounting the Enviro at floor level, it is recommended that a non combustibile hearth be used for a minimum 350mm in front of the fire.

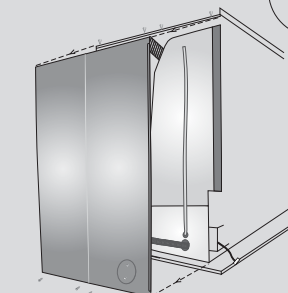


## Option of moving the gas inlet

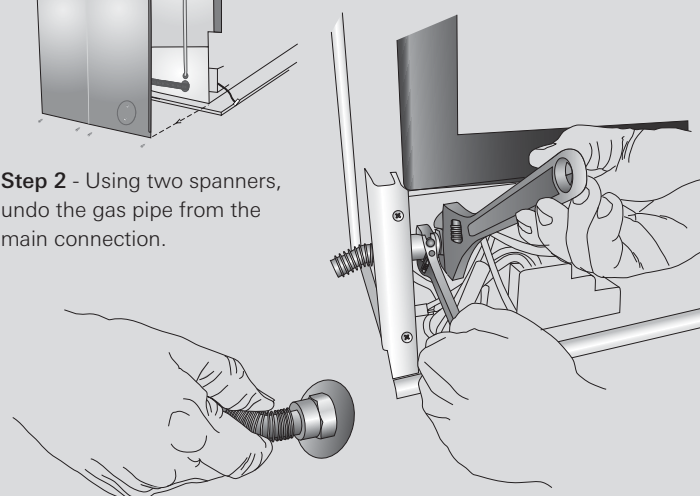
To fit in with you space, the Enviro has an option to move the gas inlet from the back to the side of the heater.



**Step 1** - Remove round flange on bottom left side. Identify the removable panel on the left side of the heater. Unscrew the 4 screws and remove panel.



**Step 2** - Using two spanners, undo the gas pipe from the main connection.



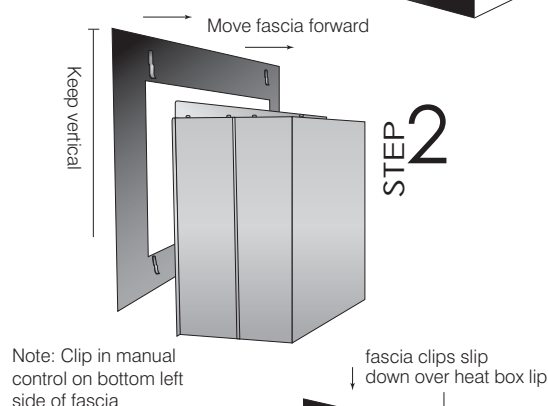
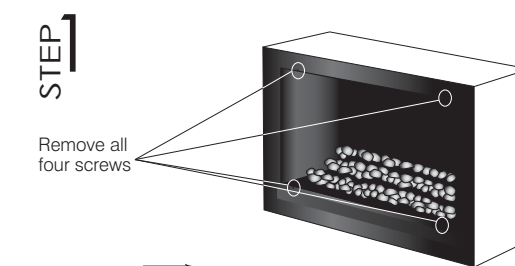
**Step 3** - Remove flexible pipe from the heater.

**Step 4** - Straighten flexible pipe using fingers as shown.

**Step 5** - Put flexible pipe back through hole (S3) and reconnect the pipe (S2) then replace side panel (S1). Finally, replace the little round flange from the side and screw into place to cover the hole on the back panel.

## Attaching the fascia

While attaching the fascia is straight forward, it is important that it remains vertical all the time to make sure the top and bottom clip in by way of clips at both the top and bottom. (Before fascia can be removed, door must be unscrewed and removed)



Note: Clip in manual control on bottom left side of fascia

