

outdoor entertaining
made easy

BBQ Accessories



Pizza Accessories



Vinyl Covers



BBQ Accessories

BBQ accessories



Flexible Refillable Gas Lighter
MODEL No. BA1017

Refillable with fuel window
Safety lock
Heat resistant nozzle with adjustable flame
Ideal for BBQs, heaters, fireplaces, camping etc
Supplied in blister pack with printed backing card



Butane Gas Refill
MODEL No. BRC10

Use for refilling flexible refillable gas lighter
Fits most butane refillable lighters
Available in display pack of 25



Gasmate Remote Digital Grill Thermometer
MODEL No. BA1008

Programmable
Built in timer and LED flashlight
5 meat selections
5 cooking settings
Beeps when food is ready
Up to 30 meter range
Instruction manual included
Includes 4 x AAA batteries



Stabilising Legs
MODEL No. SL4

Prevents your gas cylinder from tipping over, thereby, increasing safety
Pack of four legs
Quick and easy to fit to most camping cylinders



Gasmate SIZZLE! Cookbook
MODEL No. GBOOK1

Sizzle! has nearly 200 recipes for people with all levels of barbecuing skills. Absolute classics such as barbecue chicken, prawns, sausages and the perfect steak, through to modern ideas including lamb kofta skewers, satay pork sugar cane sticks and tea scented sticky duck.



All Purpose Barbecue Light
MODEL No. APL100

Attach to any BBQ with 2 mounting options: clamp or magnet
6 high intensity LED bulbs
60cm flexible arm
Illuminates an area up to 85cm diameter
Can also be used as a light for any application
Water resistant
3 x AAA batteries included



Gasmate BBQ Apron
MODEL No. BA1002

Cotton / Polyester
Binding around edge
One size fits all



Gasmate BBQ Leather Gloves
MODEL No. BA1009

One size fits all
Heat proof and durable
1 pair



BARB-I-CAD
MODEL No. BCAD10

Stores all your BBQ utensils and condiments in an easy to carry kit
Holds and dispenses paper towel for easy clean-up
Carry handle makes it ideal for the backyard, camping or picnics
Australian designed



Gasmate Pizza Trays
MODEL No. BA1013

Pack of 2
410mm diameter



Gasmate Pizza Spatula
MODEL No. BA1014

240mm x 250mm
Stainless Steel lifting surface
Folding handle with locking device

Pizza Oven accessories

A range of products that are ideal for using when cooking pizza in the Gasmate Pizza Oven



Gasmate Pizza Cutter
MODEL No. BA1012

Stainless steel blade that makes slicing pizza easy
Thumb guard protects fingers from the blade



Gasmate Pizza Oven Stone
MODEL No. BA1019

360mm x 380mm x 10mm
Ceramic food grade stone
Distributes heat evenly to pizzas or other baked food

Rotisserie kits



Deluxe Rotisserie Kit MODEL No. GRT2

Suits Gasmate and most barbecues with roasting hoods, up to 6 burners
2 x 4 prong forks
4 Piece shaft
Supplied with all mounting hardware
Uses 2 x D size batteries or transformer (not included)
Can be adapted to 240V
Individually boxed for point of sale promotion



240V Deluxe Rotisserie Kit MODEL No. GRT3

Suits Gasmate and most barbecues with roasting hoods, up to 6 burners
4 x Heavy duty 2 prong forks
4 Piece shaft
Supplied with all mounting hardware
Individually boxed for point of sale promotion



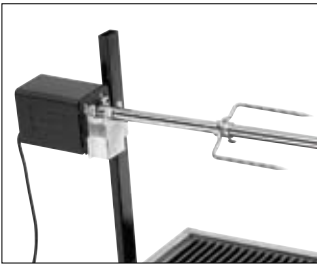
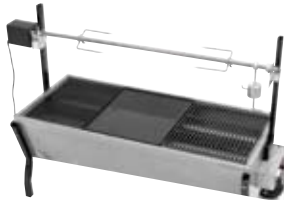
240V Deluxe Stainless Steel Rotisserie Kit MODEL No. GRT4

Stainless steel motor housing and 3 piece shaft
Suits Gasmate and most barbecues with roasting hoods, up to 6 burners
4 x Heavy duty 2 prong forks
Supplied with all mounting hardware
Individually boxed for point of sale promotion



240V Deluxe Stainless Steel Rotisserie Kit With Light MODEL No. GRT5

Includes convenient light with 20watt light globe included
Stainless steel motor housing and 3 piece shaft
Suits Gasmate and most barbecues with roasting hoods, up to 6 burners
4 x Heavy duty 2 prong forks
Supplied with all mounting hardware
Individually boxed for point of sale promotion



Gasmate Large Rotisserie Kit MODEL No. BA1016

240V AC rotisserie motor rated at 30Kg maximum
1 piece stainless steel shaft, 15.9mm diameter and 1200mm long
2 stainless steel prongs, stainless steel neck brace, leg brace, rear leg brace, shaft locking ring and thumb screws
1.2Kg counter balancing weight

Rotisserie parts



Gasmate Rotisserie Rods

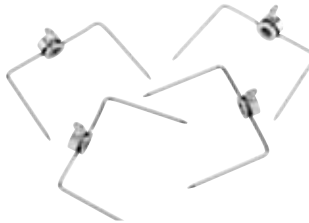
One piece rod
Chrome plated
9mm hex shaft
Includes handle

MODEL No. BA1004

950mm Long

MODEL No. BA1005

1150mm Long



Gasmate Rotisserie Prongs

MODEL No. BA1006

Chrome plated
4 pieces per set



Gasmate Rotisserie Counterweight Balance

MODEL No. BA1007



Gasmate Rotisserie Motor

MODEL No. BA1003

Operates on 240Volts

BBQ Hotplates & Grills

BBQ HOTPLATES

Reversible – ribbed and flat sides for cooking versatility (excluding stainless steel models)

Fits most brands of BBQs

Individually boxed for point of sale promotion
485mm length

Durable Stainless steel, cast iron or satin enamel finish



BBQ Hotplates - Stainless Steel

MODEL No.	WIDTH	LENGTH
BPS160	160mm	485mm
BPS240	240mm	485mm
BPS320	320mm	485mm
BPS400	400mm	485mm



BBQ Hotplates - Cast Iron

MODEL No.	WIDTH	LENGTH
BPC160	160mm	485mm
BPC240	240mm	485mm
BPC320	320mm	485mm
BPC400	400mm	485mm

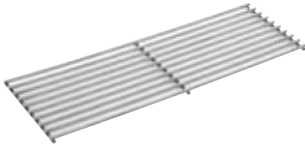


BBQ Hotplates - Satin Enamel

MODEL No.	WIDTH	LENGTH
BPE160	160mm	485mm
BPE240	240mm	485mm
BPE320	320mm	485mm
BPE400	400mm	485mm

BBQ GRILLS

Raised bar design for a char grill effect
 Fits most brands of BBQs
 Individually boxed for point of sale promotion
 485mm length
 Durable Stainless steel, cast iron or satin enamel finish



BBQ Grills - Stainless Steel

MODEL No.	WIDTH	LENGTH
BGS160	160mm	485mm
BGS240	240mm	485mm
BGS320	320mm	485mm
BGS400	400mm	485mm



BBQ Grills - Cast Iron

MODEL No.	WIDTH	LENGTH
BGC160	160mm	485mm
BGC240	240mm	485mm
BGC320	320mm	485mm
BGC400	400mm	485mm



BBQ Grills - Satin Enamel

MODEL No.	WIDTH	LENGTH
BGE160	160mm	485mm
BGE240	240mm	485mm
BGE320	320mm	485mm
BGE400	400mm	485mm

BBQ ROASTING DISHES

Deep dish design – fry, bake, roast
 Fits most brands of BBQ
 Boxed for point of sale promotion
 485mm length
 Durable cast iron or satin enamel finish



BBQ Roasting Dishes Cast Iron with Lid

MODEL No.	WIDTH	LENGTH
BDC240	240mm	485mm
BDC320	320mm	485mm
BDC400	400mm	485mm

BBQ Roasting Dishes Satin Enamel with Lid

MODEL No.	WIDTH	LENGTH
BGE240	240mm	485mm
BGE320	320mm	485mm
BGE400	400mm	485mm



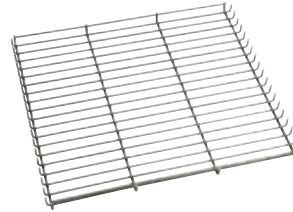
Plate and Grill Lifter

MODEL No. GGL100
 Cast iron finish
 Lift plates and grills easily



Ceramic Briquettes

MODEL No. GMCR25
 Suits ceramic briquette flame tamers
 Gives food an enhanced BBQ flavour
 Reduces flare-ups
 Pack of 25
 Individually boxed for point of sale promotion



Lava Rock Tray

MODEL No. LT-1
 Suits most brands of BBQs
 Steel construction
 400mm x 425mm
 Individually boxed for point of sale promotion

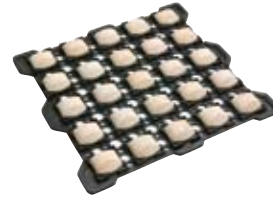


Gasmate BBQ Cleaning Brushes

3 in 1 Brush includes: Scraper, Scourer and Wire Brush.

Standard

MODEL No. BA1010
 22cm Long



Ceramic Briquette Flame Tamers

MODEL No. GFTCB4
 Large – 400 x 425mm
 MODEL No. GFTCB3
 Small – 330 x 425mm
 Suits Gasmate and most other barbecue models
 Position beneath grill plate above burners
 Gives food an enhanced BBQ flavour
 Durable cast iron construction
 Gasmate ceramic briquettes sold separately
 Individually boxed for point of sale promotion



Euro Cloth Cleaner

MODEL No. GM-36
 Stainless steel bbq cleaner and treatment
 125ml

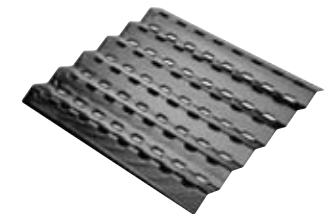
Flame tamers

Suits Gasmate and most other BBQs
 Prevents flare-ups
 Improves heat distribution
 Position beneath grill plate, above burner
 Use in place of lava rock
 Individually boxed for point of sale promotion
 Available in cast iron or vitreous enamel pressed steel finish



Cast Iron Flame Tamer

MODEL No. GFTC14
 Dimensions: 350mm x 435mm



Vitreous Enamel Flame Tamers

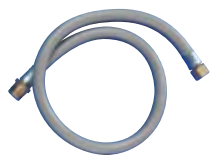
MODEL No. GFTV4
 Dimensions: 385mm x 405mm
 MODEL No. GFTV5
 Dimensions: 320mm x 405mm

BBQ hoses and regulators



Regulator & Hose Kit
MODEL No. GMBBQHRA

Suits most propane/LPG BBQs
3/8" BSP connection or 1/4" BSP connection with adaptor supplied
Handwheel cylinder connection to suit POL type cylinders
AGA certified



LP Gas BBQ Hose

3/8" BSP-MT fitting to accommodate a regulator and a 1/4" BSP-F swivel nut to attach to a BBQ manifold inlet

MODEL No. GM600
Dimensions: 6 x 600mm

MODEL No. GM900
Dimensions: 6 x 900mm

MODEL No. GM1200
Dimensions: 6 x 1200mm

MODEL No. GM1500
Dimensions: 6 x 1500mm



LP Gas BBQ Hose

MODEL No. GM110

Suits most Gasmate portable barbecues

900mm hose with POL fitting and 1" - 20 UNEF

BBQ REGULATORS



MODEL No. GM8010-1

Right angled regulator to suit POL cylinders with 3/8" BSP-F outlet to accommodate hoses, adaptors and other attachments

MODEL No. GM8010R-3

Right angled regulator to suit 3/8" BSP-LH cylinders with 3/8" BSP-F outlet to accommodate hoses, adaptors and other attachments

Natural gas conversion kits



Natural Gas Conversion Kit

MODEL No. NGC30

Suits most brands of BBQs
Suitable for 2 - 6 burner BBQs

Installation by licensed installer required

Includes all parts required for conversion

Complete with bayonet socket

MODEL No. NGC40

Suits most brands of BBQs
Suitable for 2 - 6 burner BBQs

Installation by licensed installer required

Includes all parts required for conversion

Complete with ball valve

BBQ replacement parts

BBQ IGNITION KITS



GASMATE ELECTRONIC IGNITION KITS

Electronic ignitor

Able to fit most BBQs

Piezo box, cable, electrode and collector box

Batteries not included

Available in 2 sizes to suit different size BBQs

Gasmate 2pt Electronic Ignition Kit

MODEL No. GME-PIK-2

Gasmate 4pt Electronic Ignition Kit

MODEL No. GME-PIK-4



BBQ Replacement Piezo Ignition Kit

MODEL No. GMPIK-1

Piezo ignitor

Suit most brands of BBQs

Piezo button, cable, electrode and collector box Blister pack

BBQ KNOBS



REPLACEMENT BBQ KNOBS

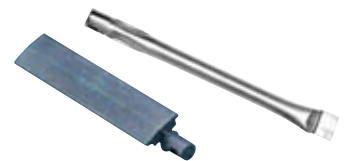
MODEL No. GMKN3 / GMKN4 / GMKN5

Suits most brands of BBQs

Different designs available

Pack of 2

BBQ BURNERS



Fit most brands of BBQs

MODEL No. GRB8

Durable cast iron for longevity

Cast burner ports for stable flame pattern

Individually boxed for point of sale promotion

MODEL No. GRB8SS

Stainless steel burner



Vinyl covers

BARBECUE COVERS



Standard Range 10 Gauge Vinyl Covers

Keeps your BBQ protected from the elements

Velcro tabs for secure fit (Kettle BBQ cover features an elastic opening)

Supplied with printed card and hanging polybag

Heavy Duty Range 10 Gauge Vinyl Covers

With 150D polyester backing for extra protection and durability

Super Deluxe Range 0.5mm Black Pvc

With polyester backing

Packaged in full colour box for maximum shelf exposure

2 Burner Hooded

C2H - STANDARD
1280 x 620 x 1170mm (LxWxH)

C2HD - HEAVY DUTY
1280 x 620 x 1170mm (LxWxH)

3 Burner Flat Top

BC3FT - STANDARD
1280 x 560 x 900mm (LxWxH)

BC3FTD - HEAVY DUTY
1280 x 560 x 900mm (LxWxH)

3 Burner Hooded

BC3RSD - HEAVY DUTY
1550 x 640 x 1170mm (LxWxH)

4 Burner Flat Top

BC4FT - STANDARD
1650 x 620 x 900mm (LxWxH)

BC4FTD - HEAVY DUTY
1650 x 640 x 900mm (LxWxH)

4 Burner Hooded

BC4RS - STANDARD
1650 x 640 x 1170mm (LxWxH)

BC4RSD - HEAVY DUTY
1650 x 640 x 1170mm (LxWxH)

BC4RSSD - SUPER DELUXE
1650 x 640 x 1170mm (LxWxH)

6 Burner Flat Top

C6F - STANDARD
1900 x 640 x 900mm (LxWxH)

6 Burner Hooded

BC6RS - STANDARD
2080 x 640 x 1170mm (LxWxH)

BC6DRD - HEAVY DUTY
2080 x 640 x 1170mm (LxWxH)

BC6RSSD - SUPER DELUXE
2080 x 640 x 1170mm (LxWxH)



Pizza Cooker Cover BC1D

Heavy duty polyester with PVC backing

Keeps Pizza Oven clean and protected from the elements

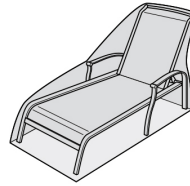
FURNITURE COVERS

Standard Range 6 Gauge Vinyl Covers

Protects your furniture from the elements

Individually boxed for point of sale promotion

Heavy Duty Range 10 Gauge Black Pvc Vinyl Covers With 150D Polyester Backing



Sun Lounge

SLCB - STANDARD
1735 x 745 x 905mm (LxWxH)

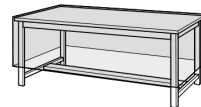


6 Stack Resin Chairs

RSCCB - STANDARD
650 x 620 x 1100mm (LxWxH)

6 Stack Aluminium Chairs

SCCB - STANDARD
SCCD - HEAVY DUTY
650 x 850 x 1220mm (LxWxH)



Rectangular Table (Large)

RCTSDL - HEAVY DUTY
2750 x 2000 x 700mm (LxWxH)



Furniture Covers 3, 5, 7 & 9 Piece

FC3B - STANDARD
1800 x 900 x 750mm

FC5B - STANDARD
FC5D - DELUXE
2250 x 2250 x 750mm

FC7B - STANDARD
FC7D - DELUXE
2800 x 2150 x 750mm

FC9B - STANDARD
FC9D - DELUXE
2600 x 2600 x 750mm



Umbrella Cover

MODEL No. FCUMB

0.12mm Black PVC vinyl with 150D polyester backing

Suits 2.5 to 3.0 metre umbrellas



Gasmate BBQ Mats

Keeps the area in front of your BBQ clean and free from BBQ cooking splatters

Binding around edge

0.5mm black PVC textured with polyester backing

MODEL No. BA1000
Medium - 1800 x 720mm

MODEL No. BA1001
Large - 2200 x 720mm



22" KETTLE

C4K - STANDARD
685(D) x 762(H)mm

C4KD - HEAVY DUTY
685(D) x 762(H)mm

- SPECIALIST GASMATE DEALER -
HEATWORKS
COOLWORKS
126 MAGILL RD NORWOOD // 608 NORTH EAST ROAD HOLDEN HILL

Due to continual product development, the product you purchase may differ slightly from the one shown here. Gasmate® is a registered trademark of Sitro Group Australia Pty. Ltd. www.gasmate.com.au and AberGas Ltd. Hamilton, N.Z. www.gasmate.co.nz